

**NEXT MEETING:**  
**March 19**  
**Member Slide Night:**  
**Analog Only, No Digital!**



Conrail's Rochester Branch local arrives at Rochester Jct., on February 20, 1979, as seen from the platform of the old station. The local will drop off the cars that do not need to be hauled down to Lima and pick them back up on the return trip. The branch to Lima was abandoned in 1981. The only part of this scene that still exists today is the house in the background. MIKE STELLPFLUG PHOTO

# Is it Spring yet?

## **INSIDE**

Museum News . . . . .	3
Annual Rules Class . . . .	3
Utica Fan Trip . . . . .	4
LAL Excursion . . . . .	5
2015 Event Schedule . .	6
Annual Banquet . . . .	3, 7

Your museum is slowly emerging from deep snow banks as winter is winding down and spring is just around the corner! As the snow begins to melt away, we're going to be busy getting ready for our 2015 operating season.

The annual Rules Class has been scheduled for **Saturday, March 14**, and is mandatory for all operating personnel who wish to operate trains, trolleys, or track cars on our railroad. We strongly encourage ALL of our volunteers to take the safety training that is first part of this course. See page 3 for more details.

Our annual banquet has been scheduled for **Saturday, March 28**, and we're pleased to welcome career railroader Don Brown as our guest speaker. You won't want to miss this fun event, so make sure

to reserve your tickets early!

There are many things we want to accomplish this year, but we simply do not have enough volunteers to contribute. We are also in need of volunteers to help fill some leadership roles at the museum. How do we get more volunteers for our vital projects? Over the next few months, your Board of Trustees will be reaching out to you for help filling out some of these roles, especially in the Buildings and Grounds Dept. Can you suggest any candidates? We're looking forward to another great year of growth. **Please reach out and ask how you can get involved!**

Have questions or comments? Call me at (716) 474-2833 or by email at [mdow@rochester.rr.com](mailto:mdow@rochester.rr.com).

—Mike Dow, Museum President





[www.rgvrrm.org](http://www.rgvrrm.org)

#### MUSEUM OFFICERS

##### PRESIDENT

Mike Dow  
(716) 474-2833

##### VICE PRESIDENT

Joe Nugent

##### TREASURER

Dave Peet

##### RECORDING SECRETARY

Otto M. Vondrak

##### CORRESPONDING SEC'Y

Joel R. Shaw

##### TRUSTEES

Dave Boswell

Bob Burz

Peter Gores

Jim Johnson

Jim Otto

David Scheiderich

Mark Wilczek



The official publication of  
the Rochester & Genesee Valley  
Railroad Museum

Volume 58, No. 7

##### EDITOR

Otto M. Vondrak  
ovondrak@yahoo.com

##### PRINTING AND MAILING

Dave Peet  
Don Wawrzyniak

©2015 Rochester & Genesee Valley Railroad Museum. The SEMAPHORE is published monthly by the Rochester & Genesee Valley Railroad Museum. Electronic distribution by e-mail is free. First-Class mailing is available for \$7.00 a year. Non-member mailed subscriptions are \$12.00 and run from January 1 to December 31. Member meetings are held the third Thursday of each month, and the Board of Trustees meets the first Thursday of each month. Any items related to the activities of the Rochester & Genesee Valley Railroad Museum, and regional railroad history and current events are gladly accepted for publication.



## AROUND THE MUSEUM

**ABOVE:** The month of February left the museum buried under a blanket of snow more than two feet deep in some places. We didn't let a little white stuff get in our way, volunteers cleared the way so we could continue to access the Restoration Shop throughout the winter. JEREMY TUKE PHOTO  
**RIGHT:** Work continues on our Lehigh Valley caboose. Volunteer Adam Lloyd removes layers of old paint from interior metal surfaces with an air-powered needle scale gun on February 28, 2015. This will help us prepare the surface for its finish coat. **BELOW:** Volunteer Rand Warner removes the last bits of paint from the exterior of the caboose. We hope to apply a fresh coat of paint this year! Your donations in any amount will help us reach that goal. JOE NUGENT PHOTOS



#### JOIN THE MUSEUM TODAY

Annual Dues: \$25.00

Rochester & Genesee Valley RR Museum

P.O. Box 23326

Rochester, NY 14692-3326

PLAN AHEAD: Next Meeting:

**April 16**

at 40&8 Club, Rochester, NY



## ROCHESTER & GENESEE VALLEY RAILROAD MUSEUM

VISIT OUR WEB SITE: [WWW.RGVRRM.ORG](http://WWW.RGVRRM.ORG)

### MUSEUM CONTACT INFO

#### MUSEUM PRESIDENT

Mike Dow

(716) 474-2833 [mdow@rochester.rr.com](mailto:mdow@rochester.rr.com)

#### MUSEUM MANGLER

Mark Wilczek

(585) 721-1377 [mwilczek@rochester.rr.com](mailto:mwilczek@rochester.rr.com)

#### MOTIVE POWER SUPT.

Joe Nugent

(585) 944-1047 [joe.r.nugent@gmail.com](mailto:joe.r.nugent@gmail.com)

#### OPERATIONS SUPT.

Jim Otto

(585) 755-8942 [jamesotto@gmail.com](mailto:jamesotto@gmail.com)

#### TRACK AND ROW SUPT.

Bob Achilles

(585) 421-0876 [BobAchilles@aol.com](mailto:BobAchilles@aol.com)

#### PROGRAM CHAIRMAN

John Stewart

(585) 704-8885 [johnrstewart3@gmail.com](mailto:johnrstewart3@gmail.com)

#### MEMBERSHIP CHAIRMAN

Sam Rosenberg

[ALC0251@frontiernet.net](mailto:ALC0251@frontiernet.net)

#### VOLUNTEER COORDINATOR

Jim Ziobro

(585) 889-5316 [rgvrr.ziobro@yahoo.com](mailto:rgvrr.ziobro@yahoo.com)

### UPCOMING MONTHLY MEETINGS

On **March 19**, we will host another installment of "Members Slide Night." No digital this time, just good old analog media. Here are ground rules: Load a carousel with 40 slides, leave an empty space, then load another 40. After everyone has had a chance we will take a second pass. Please do not feel intimidated if you have never done this before. Every picture tells a story. So far Duncan Richards, Jeremy Tuke, and Pete Gores have offered to show slides. To sign up for a slot, please contact program chair John Stewart.

On **April 16**, the Operations Dept. will give a special presentation about operating and training opportunities at your museum. Here's your chance to find out how to get your chance at the throttle! Running the trains not your thing? We also need conductors, brakemen, and car hosts, all of which need to be trained and rules qualified. Get all your questions answered at this informative presentation.

Please note, on **May 21**, meetings will move to Industry Depot, where we will



The annual Book of Rules class will be held on March 14 at RIT. This class is required for anyone interested in running trains, trolleys, or track cars at any time on our joint railroad. The first part of the class is safety training, which we encourage all volunteers to attend. JOE NUGENT PHOTO

enjoy rides on your museum railroad!

The R&GV Railroad Museum meets every third Thursday at the 40&8 Club, located at 933 University Avenue in downtown Rochester. Doors open at 7:00, meeting begins at 7:30 p.m. Museum bookstore open prior to meeting. Cash bar available. All events are free and open to the public!

—John Stewart, Program Chair

### RGV ANNUAL BANQUET SATURDAY, MARCH 28

Please join us for our annual R&GV Railroad Museum Banquet on **Saturday, March 28**, at the River's Edge Party House, located at 31 Paul Road, Rochester, N.Y. Our guest speaker will be **Don Brown**, a seasoned railroad industry veteran who has enjoyed careers with Penn Central and Conrail as well as the management team that operated the Ontario Midland and Ontario Central railroads. Please join us as we look back upon a year of accomplishments for our organization as well as enjoy Don Brown's "tales of the rails." Doors open to a social hour with cash bar at 6:30 p.m. Buffet dinner will be served at 7:30 p.m. **Banquet Tickets are \$30.00 each.** To reserve your seats, please

send check or money order with your total order to:

**R&GV Railroad Museum  
Annual Banquet**

**P.O. Box 23326**

**Rochester NY 14692-3326**

You can also purchase your tickets in person with your credit or debit card at our March 19 membership meeting (see Dave Peet). Please R.S.V.P. by March 21, 2015.

—Otto M. Vondrak, Event Coordinator

### ANNUAL RULES CLASS SATURDAY, MARCH 15

It's that time of year again... The 2015 Book of Rules class will be **Saturday, March 14** starting at 9:00 a.m. The class is being held at Rochester Institute of Technology, in Louise M. Slaughter Hall (also known as Building 78 or "CIMS") Rooms 2230/2240. Park in T Lot for best access to the building.

This class is required for anyone interested in taking part in train operations, including car hosts, brakemen, conductors, engineers, trolley motormen, trolley conductors, and track car operators. This class is required for anyone operating on our shared railroad at any time for any reason





The New York Central opened Utica Union Station in 1914, which was also used by the Delaware, Lackawanna & Western and the New York, Ontario & Western. Allen H. Stem and Alfred Fellheimer designed this architectural gem. Stem and Fellheimer were involved in the design of many noted railroad stations, including New York's Grand Central Terminal, Detroit's Michigan Central Station, and Cincinnati Union Terminal. The Utica station deteriorated badly after World War II and was threatened with demolition. Restoration began in 1978 and is ongoing. Now owned by Oneida County, the station serves Amtrak and Adirondack Scenic Railway trains, as well as Greyhound, Trailways, and Utica Transit bus lines. Since 2003, the building's official name has been The Boehlert Center at Union Station. CHUCK ANDERSEN PHOTO

(whether for the public or not). This year, we encourage all volunteers to attend the first part of rules class which is related to your personal safety around the railroad.

Class will start with mandatory Safety Training for all volunteers. For those interested in being a conductor or engineer, the required Air Brake & Train Handling class will follow after the Book of Rules Class. Coffee and donuts will be available in the morning; and we will "pass the hat" and order some pizza for lunch.

These classes are open to anyone, and are a pre-requisite for future hands-on training. If you think there's a remote chance you want to get your hands dirty this year, you must attend the full class. Can't attend March 14? We will schedule additional classes as make-ups.

If you have any questions, please contact me at (585) 755-8942 or by email at [jamesotto@gmail.com](mailto:jamesotto@gmail.com).

—Jim Otto, Operations Supt.

### LIVONIA, AVON & LAKEVILLE 50TH ANNIVERSARY EXCURSION SATURDAY, MAY 9

Mark your calendars! We're excited to announce that your museum will be operating a special fantrip in coordination with the Livonia, Avon & Lakeville Railroad on **Saturday, May 9**, to celebrate the railroad's 50th anniversary of operation. The special trains will depart the Conesus Sportsmens Club in Lakeville at 10:00 a.m. and 2:00 p.m., and will utilize our *Empire State Express* coaches. Tickets will be available from all participating Wegmans locations. That evening following the trip, a special night photo session will be coordinated by Steve Barry, editor of *Railfan & Railroad* magazine. Otto Vondrak will be organizing the event, while Dave Shields will be coordinating volunteers for the fantrip. For more details please visit [www.rgvrrm.org/LAL50](http://www.rgvrrm.org/LAL50)

—Otto M. Vondrak, Event Coordinator

### RAILFAN OVERNIGHT TRIP TO UTICA AND COOPERSTOWN JUNE 6 AND 7

Please join the Rochester & Genesee Valley Railroad Museum on our restroom-equipped, air-conditioned motor coach that will take us to Utica on Saturday, June 6, for a special Landmark Society tour of the 1914 **Utica Union Station** (once used by NYC, DL&W, and NYO&W), followed by a roundtrip train ride using **Adirondack Scenic Railway** equipment on the **Mohawk, Adirondack & Northern** to Boonville for dinner at the historic Boonville Hotel (meal is additional cost). We will also visit the **Key, Lock & Lantern** Railroadiana Show in Utica and stay overnight at the Ramada Inn in nearby New Hartford. On Sunday, June 7, we will enjoy a free continental breakfast served at the Ramada Inn and then we will depart on our motorcoach to Cooperstown and ride the **Cooperstown & Charlotte Valley**

**Railroad** (ex-D&H) and return to Rochester later that evening.

Tickets are \$155.00 per person, and includes motorcoach transportation, station tour, and train rides. You are responsible for costs of meals and lodging.

We have a block of rooms reserved at the Ramada Inn (located at 141 New Hartford Street, New Hartford, NY 13413) for Saturday night June 6. Please make your own room reservation directly with the Ramada Inn by calling (315) 735-3392 by no later than May 6 and mentioning you are with the "TRAIN GROUP." After May 6, any remaining rooms will be released. You have a choice of a room with two double beds or a single king size bed. All rooms are non-smoking. The cost is \$87.49 including all taxes.

Please order your tickets by mail, sending a check made out to:

**R&GV Railroad Museum  
Utica and Cooperstown Trip  
P.O. Box 23326**

**Rochester, NY 14692-3326**

Please include a SASE or email address

so the final itinerary and tickets can be sent to you. If you have any questions, please contact trip chairman Dave Shields by email at [marberth@aol.com](mailto:marberth@aol.com) or by telephone at (585) 315-0123.

—Dave Shields, Trip Chairman

#### MUSEUM MANAGER'S UPDATE

There is currently a very serious matter at hand that affects the successful operation of our two museums. Some of you are aware that RGVRRM and NYMT working together at a Board level can be quite challenging, and the relationship is not as smooth as many of you may think. This winter the two Boards have been working together to resolve several key issues, but as it currently stands, the NYMT Board has walked away from the table, and is considering an option of severing all relations with RGVRRM and ceasing joint operations. I assure you, this is not the result the RGVRRM Board wants to see. I do not want the first time you hear about this to be after they make their decision, and I am asking anyone concerned about

this to get in touch with the NYMT Board to express your feelings before it is too late. They have refused all attempts at meeting with their board, and they have ignored invitations to speak to our board. The NYMT will be making their final decision at their March 17 Board meeting, so the time to act is now. You can contact the NYMT board secretary Jim Dierks at [dierks66@frontiernet.net](mailto:dierks66@frontiernet.net).

—Mark Wilczek, Museum Manager

#### MUSEUM EXPENSES: A POLICY REMINDER

I forgot to add in my reminder in the January SEMAPHORE, that any expenses under \$250.00, that are not part of an approved project's budget, must be approved by the Museum Manager, or they are not eligible for reimbursement.

—Mark Wilczek, Museum Manager

#### CLASSIC CAR DISPLAY AT NYMT FOR SUNDAY, AUGUST 2

We are trying to organize a display of classic cars at NYMT for our August 2 special



**SAVE THE DATE:** The Livonia, Avon & Lakeville Railroad is operating a special excursion on May 9, 2015, to celebrate their 50th anniversary! Trains will depart from Lakeville at 10:00am and 2:00pm. Tickets will be on sale at all participating Wegmans service counters by the end of March. Don't miss this rare opportunity to ride the length of the railroad from Lakeville to Henrietta! Visit [www.rgvrrm.org/LAL50](http://www.rgvrrm.org/LAL50) for details. CHRISTOPHER HAUF PHOTO



# 2015 NYMT-RGV JOINT OPERATING SEASON

## MAY

**31 – Joint Operations “Dry Run”** – Trolley and Diesel

## JUNE

**7 – Joint Season Opening Day** – Trolley and Diesel

**14** – Trolley and Track Cars

**21 – Father’s Day Trains** – Trolley and Diesel

**28** – Trolley and Track Cars

## JULY

**5 – Subway Day Trains** – Trolley and Diesel

**12** – Trolley and Track Cars

**18 – Trolleys at Twilight/Food Truck Rodeo** – Trolley Only

**19 – Baseball Day Trains** – Trolley and Diesel

**26** – Trolley and Track Cars

## AUGUST

**2 – Classic Cars and Trains** – Trolley and Diesel

**9** – Trolley and Track Cars

**16 – Diesel Day 2015** – Trolley and extended Diesel

**23** – Trolley and Track Cars

## SEPTEMBER

**6** – Trolley and Track Cars

**13 – Fall Foliage and Fire Trucks** – Trolley and Diesel

**20 – Fall Foliage Trains** – Trolley and Diesel

**27 – Fall Foliage/RG&E Appreciation Day** – Trolley and Diesel

## OCTOBER

**4 – Fall Foliage Trains** – Trolley and Diesel

**11 – Fall Foliage/Kodak Appreciation Day** – Trolley and Diesel

**18 – Fall Foliage Trains** – Trolley and Diesel

**25 – Fall Foliage/Pumpkin Patch Trains** – Trolley and Diesel

## NOVEMBER

**1 – Fall Foliage Trains** – Trolley and Diesel



All events details posted in one place!

Tell your friends to please visit...


**RochesterTrainRides.com**

a joint project of New York Museum of Transportation  
and the Rochester & Genesee Valley Railroad Museum

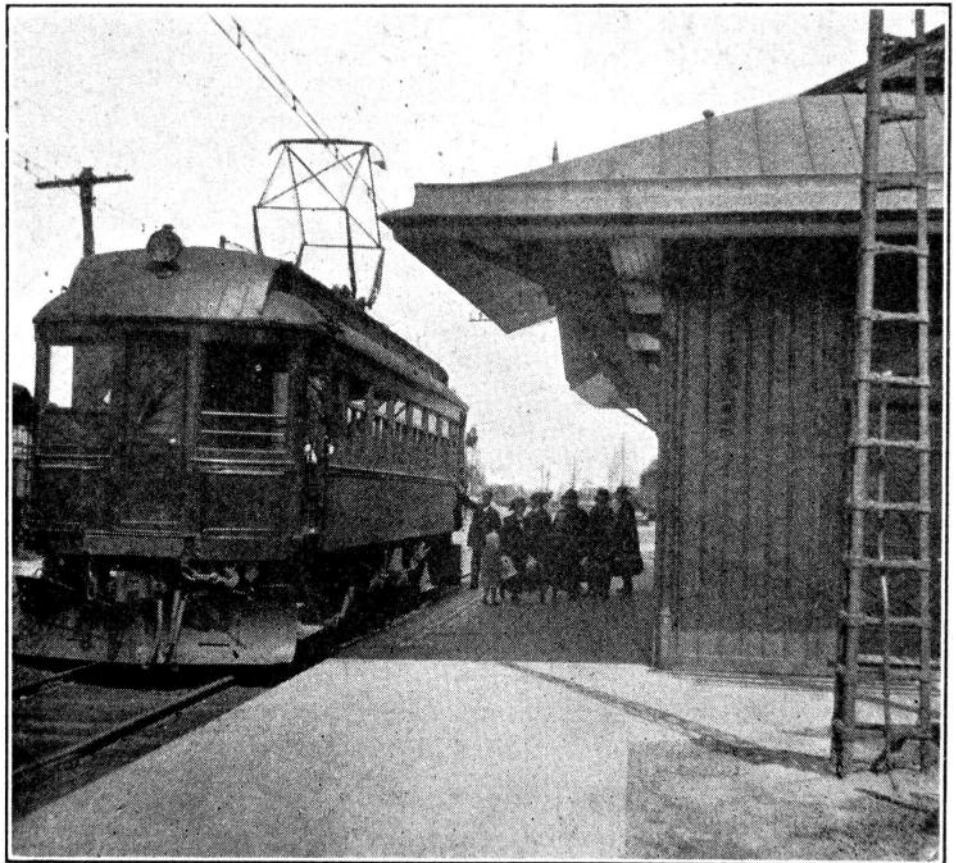
event. In the last issue, I listed a number of our members who own vintage vehicles. Joel Shaw reminded me he is the proud owner of a late 1931 Ford Model A pickup truck, an example that has been a National Winner at shows. We look forward to seeing Joel’s ‘31 at our August 2 event, along with many others. Please reach out to your friends and RSVP to [ovondak@yahoo.com](mailto:ovondak@yahoo.com) for details.

—Otto M. Vondrak, Event Coordinator

## RGVRRM BOARD MEETING

The next Board of Trustees meeting is **Thursday, April 2, 2015**. Meetings are held at the 40&8 Club, 933 University Ave., Rochester, starting at 6:00 p.m. To get an item added to the agenda, please contact president Mike Dow at (716) 474-2833 or email [mdow@rochester.rr.com](mailto:mdow@rochester.rr.com). Remember that any members are welcome to attend, but to address the board, you must be on that meeting’s agenda. 

**[WWW.RGVRRM.ORG](http://WWW.RGVRRM.ORG)**  
**[FACEBOOK.COM/RGVRRM](https://FACEBOOK.COM/RGVRRM)**  
**[YOUTUBE.COM/RGVRRM](https://YOUTUBE.COM/RGVRRM)**



**ELECTRIFYING TIMES AT AVON:** This photo was taken from an article that appeared in *RAILWAY AGE* in 1913 about the Erie’s electrification of the Rochester Division from Rochester to Avon to Mt. Morris. Manufactured by St. Louis Car Co., the electric coaches were 55’ long, wood bodied, with power collected by a single center-mounted pantograph. Electric service on the Rochester Division lasted from 1907 to 1931. The Mt. Morris Branch was abandoned in 1940, and the last passenger trains to Rochester operated in 1941. Today, a short portion of the Mt. Morris Branch is used by the Livonia, Avon & Lakeville to serve the Kraft Foods plant in Avon.

# *R&GV Museum Banquet*

**SATURDAY, MARCH 28**

**River's Edge Party House**

31 Paul Road - Rochester, New York

**DOORS OPEN AT 6:30**

**Cocktail Hour - Buffet Dinner**

**Award Presentations**

**GUEST SPEAKER: Don Brown**

Career railroader with Penn Central, Conrail,  
Ontario Midland and Ontario Central



Join us as we look back upon a year of accomplishments for our organization as well as enjoy Don Brown's recollections of his long career railroading in Rochester!

**SEND CHECK OR MONEY ORDER WITH TOTAL ORDER TO:**

**R&GV BANQUET • P.O. BOX 23326 • ROCHESTER, NY 14692-3326**

**Please R.S.V.P. by March 21 to [ovondrak@yahoo.com](mailto:ovondrak@yahoo.com)**

**This Event is Open to the Public**  
**Please Reserve by March 21**

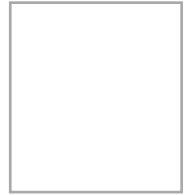
**CONTRIBUTIONS:** We welcome your contributions to The Semaphore! Any materials related to the activities of the Rochester & Genesee Valley Railroad Museum, as well as the history of Rochester's railroads are welcome for publication in THE SEMAPHORE. All written materials should be submitted as Microsoft Word or plain text documents, and all photographs as high-resolution JPEG files. Materials and inquiries should be emailed to the Editor at [ovondrak@yahoo.com](mailto:ovondrak@yahoo.com) or call (585) 820-2341.





**THE SEMAPHORE**

ROCHESTER & GENESEE VALLEY RAILROAD MUSEUM  
P.O. BOX 23326  
ROCHESTER, NY 14692-3326



**This Month's Meeting:**

**March 19**

**7:30 PM at 40&8 Club**

**933 University Ave., Rochester NY**

**Next Month's Meeting:**

**April 16**

**7:30 PM at 40&8 Club**

**933 University Ave., Rochester NY**

*Have you sent in your  
membership renewal yet?*

— Like us on Facebook: [facebook.com/rgvrrm](https://facebook.com/rgvrrm) —



A Rochester & Southern local train headed for LeRoy passes the old passenger station in Scottsville, N.Y., in February 2015. ELLIOT COURTNEY PHOTO