



# The Semaphore

Newsletter of the Rochester NY Chapter, NRHS  
P.O. Box 23326, Rochester, NY 14692-3326; Published Monthly

April 2000  
Volume 42, No. 8

Program for April 20:

## A Kaleidoscope of Modern Railroading

by

**Beth Krueger**

Beth Krueger, our Membership Chairperson, will be presenting a potpourri of slides featuring present day railroads. Also included will be views from our last Year End Party in January.

## Program Committee

Jack Matsik (Chairman) 442-6269  
Bill Limburg 586-9470  
Dan Cosgrove 352-6931  
Dave Luca (Board liaison) 288-0318

The Committee welcomes suggestions and ideas for future programs. Contact any of the Committee members.

**Summer Library Hours**  
7:30 to 9:30 Monday,  
April 24

## Program Chair Vacates in May

Jack Matsik, our Program Chairman over the last few years, will be 'retiring' from this post at the end of May. One member has expressed an interest. If there are others, please contact Jack at 442-6269.

Our meeting for the three summer months take place at the Depot. After that ????

## Was your name "High-lighted" on the address label?

If so, your Chapter and National memberships have expired, and this will be the last issue of *The Semaphore* you will receive!

See the box on Page 2 on how to correct this situation.

## Casey Jones Days

### The Centennial of the Wreck at Vaughan

To herald in the new millennium and initiate our summer operating season, the museums, the New York Museum of Transportation and the Rochester Chapter of the National Railway Historical Society's depot museum, will honor Casey Jones on the centennial of his fatal train wreck which occurred April 30, 1900.

The twin transportation museums will open for the season on Sunday, April 30, 2000, at 11:00 AM, exactly one hundred years to the date of Casey Jones' last ride. Each Sunday during the entire month of May will be dedicated to the memory of engineer Casey Jones, the story behind his tragic accident and exhibits relating to the development of modern safety devices and understandings needed to prevent such unfortunate incidents in the future.

**Sunday, April 30:** Museums open to the public to view Casey Jones exhibits\*\* and to take track car rides between the two museums.

**Sunday, May 7:** Viewing Casey Jones exhibits, track car rides plus Story Tellers relating and reading train related incidents.

**Sunday, May 14:** Viewing Casey Jones exhibits, track car rides plus a Railroad Sing-A-Long.

**Sunday, May 21:** Viewing Casey Jones exhibits, track car rides plus Demonstration runs of the wonderfully restored Casey Jones speeder once used on the Rochester subway system.

**Sunday, May 28:** Viewing Casey Jones exhibits, track car rides, plus an Operation Life Saver Program, vital to safety around rail crossings and rail yards and the evolution of Railroad safety signals.

\*\* Exhibits will include a map and scale model to aid the understanding how the disaster occurred, illustrations of the wreck, the steam engine involved, and the ballad of Casey Jones that became world famous.

Donovan Shilling

## Pancake Breakfast: May 6

Details on Page 2

## 15 Days to Season Opening = Priorities!

- > Indoor Cleanup: NYMT & RGVRM
- > Outdoor Cleanup: NYMT & RGVRM
- > Depot Display at RGVRM
- > Gallery Display at NYMT
- > Main Line Track Inspection & Adjust
- > Track Car Inspection & Lube
- > Track Car Training
- > Tour Guide Training
- > Advertising
- > Brochures
- > Special Event "Casey Jones" Theme
- > Complete Switch #6 and Relocate Cars

## Notice \*\*\* Notice \*\*\* Notice

### Chapter Changes PO Box

The Chapter's Post Office Box in downtown Rochester has been changed to the Jefferson Road Main Post Office. This makes it more convenient to retrieve our mail while on the way to the Depot for further distribution.

The new P.O. Box is:

**P. O. Box 23326**  
**Rochester, NY 14692-3326**

### Attention Newsletter Exchanges:

Those organizations who exchange newsletters with our Chapter should consider sending them to this editor, which will eliminate several weeks before receiving them via the PO Box address. Those newsletters containing historical information are subsequently placed in the Chapter's Library.

That address is:

**Editor, The Semaphore**  
**Gale E. Smith**  
**299 Seneca Park Ave.**  
**Rochester, NY 14617-2433**

## News About Our Young Railfan Group

### Young Railfan Earns Scouting's Highest Honor

Brett Hendershot, a charter member of the Rochester Chapter's Young Railfan group, has been named an Eagle Scout.

Brett, who just turned 18, capped off a successful scouting career with an Eagle induction ceremony on Sunday, April 9 in Hilton. The Eagle award is rare; only about 1% of all youth who join BSA groups in the U.S. achieve this rank.

Brett is a member of Troop 99 in Hilton, where he now serves as Assistant Scoutmaster. He is the son of Ron and Nancy Hendershot of Hilton.

Brett will graduate from Norman Howard School in June and plans to attend college in Pennsylvania in the Fall.

Since joining the Chapter's Young Railfan group, Brett has been active in a number of Museum projects. He attended the NRHS Railcamp program in Scranton last summer and hopes to return for Railcamp II this summer. Brett is currently training to become a track car operator at the museum.

**Congratulations Brett.** We wish you the best!

### New Young Railfans

Three more young men have joined the Chapter's Young Railfan program. With the four who have continued from last year, we now have a total of seven participants.

New members are **Jesse Marks** and **Mark Wiczorek** who attend school in Brockport and **Andrew Slominski** who attends Pittsford Sutherland.

The new members joined following a recruiting drive in conjunction with the Otetiana Council of Boy Scouts of America.

Special thanks go to Chris Hauf who presented a slide show of Chapter and Museum activities at our mid-March recruiting night. We are grateful to Jeremy Tuke, John Redden, John Stewart, Rand Warner and John Weber who represented the Chapter at the recruiting night.

The new members had their first session at the depot on Saturday April 1. Along with "veteran" Young Railfans **Nathan Dunn** and **Doug Verecke**, they toured our operation, began research on the newly-acquired REA cart and worked on a variety of projects including interior walls of the BR&P caboose, paint removal from Subway Car 60's seats and track work on Track #6.

### Young Railfans to Host Annual Pancake Breakfast May 6

Work up an appetite and mark the calendar for Saturday, May 6.

On that day from 8-10 AM, the Chapter's Young Railfans group will host Chapter volunteers for a "more than you should probably eat" pancake breakfast at the R&GVRR Museum.

This is a good opportunity to spend a volunteer day working on Spring projects at the Museum and to do it on a full stomach.

Bring friends along. This is also a great chance to introduce potential new members to our operation!

### Curtis Boyer

There was a time way back when Curt almost WAS the Museum. He restored the exhibits, making any missing parts. He made explanatory signs for the exhibits for interpretation. Then on top of that he was the tour guide, explaining the restored exhibits, via the signs, to our visitors. Talk about a "one man band"! Curt has left an indelible mark on our caboose, tool car, EKC #6 loco, and Depot -- virtually all the exhibits we had way back when. He will surely be missed, but never forgotten. Our very best to his strongly supportive wife, Dorothy.

(Editor: For some unknown reason, I listed Curt's wife as Carol in the March issue. After quickly being notified of my mistake, I sent a note of apology to Dorothy.)

### Our Sympathy to

**Raymond Roe** in the loss of his wife, Joan, who passed away on March 24. It sure has been a tough year for the Roe brothers. Our thoughts and prayers are with you all. Ray's wife, Joan had been out to the Museum on various occasions. Donations in Joan's name may be made to Lollypop farm or Advent House.

## Membership Report

Beth Krueger, Chair

### New Members

Please welcome these new members:

**Mr. John M. Muchler** Interests: Library, Publications & Historical research

**Mr. Alfred G. Olsen III** Interests: Library, Museum operations & Tour guiding, Historical research, and Publications.

### Renewal Sent In?

If you sent in your dues and also received a second notice from National, please disregard the notice from National.

### Donations:

Thank you to ALL members who generously included Chapter donations with dues renewals. You will be receiving acknowledgment of the donation in the future.

### Membership Chair Contact Information:

Beth Krueger

Telephone:..... 716-288-1304 (home)

..... 716-292-2732 (work)

E-mail: ..... bkrueger@frontiernet.net

### New Member Recruitment

Bring a potential member to a Summer Depot meetings in June, July or August. Show your guest all the great things we have and done, and what the future can be with him or her joining in on "The Vision"!

### Membership Information

Dues for the calendar year are:

Regular \$30; Student/Retiree: \$25; Family; \$40 Other membership levels are available. Includes membership in the National Railway Historical Society.

If a member of NRHS and wish to join the Rochester Chapter, deduct \$15 from the above categories.

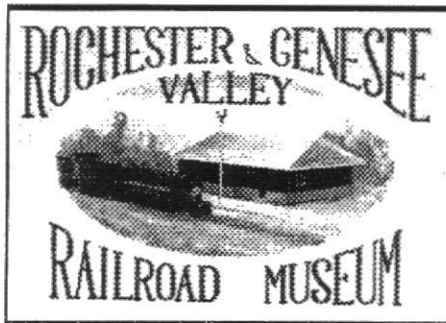
Make check payable to Rochester Chapter NRHS and send to: Rochester Chapter NRHS, P.O. Box 23326, Rochester, NY 14692-3326.

**Track Car Training Schedule on Page 7.**

**Special Events Schedule on Page 7.**

### Railroad Showcase 2000: April 29 & 30

The 14th Annual Railroad Showcase will be held on Saturday and Sunday, April 29 & 30 at the Kenan Arena, 195 Beattie Ave. Lockport, NY. The cosponsors are the Niagara Frontier Chapter and the Niagara Orleans Model Engineers. It is considered by many to be one of the best railroad-theme shows in western New York state.



Rand Warner, Director, 425-8587

## Industrial Critter Loco

Foremen: Kevin Klees

**Progress:** Beth Krueger, John Redden, Bill Chapin, Chris Hauf, Norm Shaddick and others have been coming up with research information from many sources.

Information indicates we have a very old and rare Plymouth loco Model BL, seven tons, vintage 1920's!

**Plans:** Continue exterior paint scraping, wire brushing, paint removal, and priming.

Determine plan for replacement of missing radiator and altered non-original hood.

Straighten bent braces and sheet metal.

Investigate pricing and sources for missing chains.

Investigate repair/replacement options for gasoline prime mover and all accessory systems.

Begin freeing up all mechanical elements — linkages and friction drive mechanism.

Order lots of KROIL!

## Engineering

Supt.: Jim Johnson

**Progress:** Joe Scanlon and Dale Hartnett are laying out stakes for our drainage laterals and catch basins around the Restoration Facility.

Jim Johnson and Charles Harshbarger have squeezed yet another cabinet into the Engineering area.

**Plans:** Continue to refine our engineering files to make them ever more accessible and useful to our volunteers on our many projects.

Acquire higher quality surveying equipment than what we currently have available for use.

## Heavy Equipment

Dan Waterstraat has brought the Trojan diesel loader into the Restoration Facility so he can work on the starter solenoid circuit. The starter can not presently be tripped from the operators dash. Engaging the starter by hand isn't safe.

Art Mummery, Dan Waterstraat, Scott Gleason and Bob Mader are completing the "Big Bertha" Army dump truck. With its much bigger box, it will haul more dirt than our other Army dump trucks.

With three really good Army dump trucks in service, we will be able to dispose of a couple of surplus trucks to aid cash flow.

This "Critter" arrived during the winter. Beth Krueger decorated it with a big red bow on the front. [Beth Krueger photo]



## Burro Crane

Foreman: Dick Bean

**Progress:** Art Mummery and Bob Mader have procured, via a trip to Buffalo, the missing key to the Burro puzzle — the clutch and flywheel to mate our new Detroit diesel to the old Burro transmission. They are checking it out and everything appears to fit without further machining.

Dick Bean and Hiram Colwell are replacing and replicating a rusted floor panel in the cab.

**Plans:** Install main drive chain and cover assembly.

Install clutch, flywheel and starter on Detroit diesel.

Adapt diesel to clutch housing to mate to transmission.

Install starter on diesel.

Install diesel in Burro

Install radiator for diesel.

Check out fuel system for diesel.

Check out operation of diesel in Burro crane.

Check out static operation of Burro with Detroit diesel.

Install 12 volt alternator on diesel.

Relocate Burro crane.

Install boom and new cable.

Check out dynamic operation of diesel with house, carrier and boom.

Put Burro into operational use.

## Ford Fork Lift

Art Mummery is directing the high priority rehab of our Ford fork lift, assisted by Bob Mader, Dan Waterstraat, Dick Bean, Hiram Collins, Norm Shaddick, Bob Miner and others. The engine head is off and the radiator is out. The gas tank and shroud are also removed.

We plan to clean and repair the radiator, grind the valves, replace rings and bearings if necessary and get the machine back together and working before Spring construction starts.

## Tool Car & Shops

Supt: Charles Harshbarger

Charlie Harshbarger and Jim Johnson have squeezed yet another cabinet into the tool car.

Ron Amberger is coordinating delivery of a Bridgeport mill and other equipment from Jasco Tool. Received Friday, March 31.

MIG welding equipment and plasma cutting equipment and support equipment has been ordered and received by Art Mummery and Rand Warner. Thanks to funds provided from Board of Trustees Capital Funds.



### Four Quadrants Vision

Our VISION proposal has been submitted to Albany and reviewed by Senator Alesi and his staff.

They have endorsed our vision, and will serve as a coordination focus for any discussions needed jointly with New York State Office of General Services, Office of Children & Family Services, Department of Transportation, and Department of Environmental Conservation.

Some financial support to the Vision for expansion may be possible subject to budget considerations and constraints.

Our next action will be to review our proposals with each individual agency, at the local/regional level, or at Albany/State level, as appropriate.

The desired outcome will be a series of, or a consolidation version of, long term land use agreements, or easements, for the four quadrants, and the right-of-way along Route 251 to the Cox's Ferry crossing location.

### Subway Car #60

**Foremen:** Rand Warner and Dave Luca

**Progress:** Interior wood trim is essentially all removed in conductor's rear vestibule area; also windows.

Interior wood trim is now being removed from motorman's front vestibule area; also windows.

Additional floor boards have been removed for welding access.

Roof ventilators are all off.

Roof walks are being removed.

Roof end walk at rear of car has been removed.

Thanks to car barn team of Jim Moore, Dave Luca, Dave Baer, Bob Van Vanlkenburg, Cliff Rogers, Bernie Cubitt, Warren Schantz, Hiram Colwell, Bill Chapin and others.

**Plans:** Clear out remaining interior wood at vestibules and remaining wood on roof areas.

Obtain MIG welding and plasma cutting training for our volunteers.

Obtain fire protection matting, and extra extinguishers, and water hose, and extra water supplies. Then and only then can we begin actual welding and cutting.

Obtain supplies of necessary sheet metal and welding wire and gas in correct sizes for replacing the damaged areas we have to cut out.

Begin repair of corroded areas on sides of car and at window sills.

Develop a plan for replacement of soffit areas and roof areas.

### Picture This

We hope to be able very soon to put up signboards for work starting in two of our new areas!

"Under Construction"

#### Northwest Quadrant

Joe Scanlon, Manager

LA&L RR connection switch

Storage Track & LA&L MOW staging

Rail line to river

Line Side Antique Industries of:

Sawmill

Gravel pit Stone pit

Ice pond

Sand pit

NYS/OGS Lands Agreement

(Coming your way sometime soon)

"Under Construction"

#### Southeast Quadrant

John Redden, Manager

LA&L RR Connection Switch

Storage tracks and LA&L MOW Storage

Possible team track

Steam Locomotive Terminal

Turntable

Roundhouse

Machine Shop

Water Tower

Sand Tower

Ash Pit

Coal Tower

NYS/OC&FS Lands Agreement

### Electrification

**Facilitator:** Rand Warner

**Progress:** Neil Bellenger, Scott Gleason, Dick Luchterhand, Dick Holbert, Charlie Lowe and Dan Quant from NYMT have been very busy as weather permits putting up guy wires, backbone wires, pull-off wires and bracket arm assemblies.

The RG&E donated bucket truck has been invaluable for this work; progress using the truck is very rapid.

The wire assemblies being put up have been prepared by NYMT personnel, including Bob Miner, Charlie Lowe, Don Quant, Dick Luchterhand and others.

Design of the overhead has been provided by Charlie Lowe of NYMT.

Scott Gleason has coordinated with NIMO to get the power lines raised for clearance over the south leg of the NYMT loop.

Heavy cable for substation tie-in has been obtained by Rand Warner.

Telephone wires over south leg of NYMT loop has been raised for clearance of forthcoming trolley wire.

**Plans:** Complete installation of remaining bracket arm assemblies for Phase I.

Complete all down guys and anchor guys installation for Phase I.

Prepare ears/hangers along line for installation of trolley wire for Phase I.

Plan interim relocation, close-in, installation, and protection of diesel powered 250KW power supply.

### RL&B Interurban #206

**Foreman:** Bernie Cubitt

**Progress:** Bernie, Bill Chapin, Chuck Whalen and Rand Warner are clearing out the inside of the car of any unnecessary residual materials from the car's earlier use for housing and storage.

Bernie and Chuck are removing old layers of paint in the smoker section.

Bernie, Chuck and Bill have also removed old furring strips in the ceiling of the smoker section.

Dale Hartnett has provided the special tongue and groove sheathing in just the right size to repair the roof.

Chris Hauf has provided a wonderful, LARGE enlargement of a sister car, using a print provided through John Weber from the Ogden Town Library.

**Plans:** Continue restoration of the smoker sections; including interior finish, interior trim, transom windows, car windows, borrowed seats, borrowed baggage racks, ceilings, soffits, partitions and doors.

Continue acquisition of trucks or pseudo trucks, bolsters truss rods, queen posts, coupler mounts, couplers, pilots, marker mounts, flag mounts, retrievers, poles and bases.

Fabricate replacement/replica north end.

Fabricate roof walks and end roof walks.

### Reward

For interior photo(s) or builder's interior or exterior plans for Rochester, Lockport and Buffalo Car 206 of the 200 series of cars.

## Heisler Fireless Loco

**Progress:** Ron Amberger and John Redden are coordinating quotes on lagging removal, in combination with Vulcan loco #12, for quantity savings.

John Redden has verified that the steam generator in our EKC #9 RS-3 has specs to produce 250 psig steam at 2700 lbs./hr.

Gerry Bertoldo has offered a fine supply of missing parts for the EKC #9 steam generator.

Eugene Redden has come up with an original O&M manual for the vapor steam generator.

**Plans:** Develop a short list of parts for vapor steam generator and begin acquisition of missing parts.

Enlist engineering help to fully understand operational and maintenance considerations for vapor steam generator.

Complete quotations solicitation for lagging removal and select bidder for contract award for Vulcan and Heisler.

Develop a plan for supplying steam to Heisler - on at least an interim basis - from EKC #9 diesel loco.

## Track and Right-of-way

*Supt.: Rand Warner (Acting)*

**Progress:** Track Foreman John Redden has spearheaded the rebuild of Switch #6 at the frog area, assisted by Jeff Carpenter, Dale Hartnett, Ed Van Horn, Rand Warner, Jeremy Tuke, Rick Israelson, Norm Shaddick, Bob Miner and others.

John is also into moving the east rail on the hill back up the hill a few inches to where it used to be, using a special track tool provided by Dave Luca. We will install rail anchors to keep it in place, as advised by Jeff Baxter and Bill Reid many years ago.

**Plans:** Track Foreman Mark Pappalardo will be directing continuing rehab of the passenger loading track and switch at NYMT.

Track Foreman Dale Hartnett and the Young Railfans Explorers will be repairing/replacing ties at the NYMT end damaged by tamping and ballast regulating.

Track Foreman Jeremy Tuke will be directing tie replacement in the hill section and up to Scanlon's Curve.

Rand Warner will be continuing track inspection and marking of all areas needing attention, and assisting Track Foreman in all areas.

## Thanks to...

**Bernie Cubitt** for battery drill for RL&B Car #206 project.

**Rand Warner** for workbench for RL&B Car #206 project.

The **Haines Brothers** for donation of Bay City Model 65 crane.

**Jerry Beauchamp** for donation of antique post mounted drill press.

**Rand Warner** for cooking outfit for NYC caboose.

**Keith Blackall** and RG&E for donation of Cummins 855 diesel and parts.

**Neil Bellenger** for use of tandem axle trailer and truck to deliver Cummins diesel and parts.

**Art Mummery** and **Bob Mader** for trip to Buffalo to get flywheel and clutch for Burro crane.

**Dick Bean** for arranging repair of radiator for Ford fork lift.

**Gale Smith** for donation towards new welding and cutting equipment.

**Cal Bulman** for nice assortment of 7 wood and metal railroad signs.

**Bill & Denise Coon** for donation of very good Railway Express wagon.

**Victor Parmenter** for offer of 30" gage contractor side dump car.

**Lynn Heintz** for T&G side sheathing for sweeper line car project.

## Wanted

- ☐ Good transit, engineer type
- ☐ Good level, engineer type
- ☐ Planer/table mounted
- ☐ Jointer/table mounted
- ☐ Router/table mounted
- ☐ Vertical band saw for wood and metal
- ☐ Cut off saw
- ☐ Portable band saw
- ☐ Circular saw for Car #206
- ☐ Chop saw/miter base
- ☐ Gas powered rail drill
- ☐ Gas powered rail saw
- ☐ Skid steer loader, Bobcat type
- ☐ Gage rods, any type

## Construction and Equipment

*Supt: Joe Scanlon*

The restoration building has been the place to be for the Heavy Equipment gang these past few months. Dan Waterstraat has replaced the battery box floor, repaired the gear drive for the air compressor and rewired the charging and starting systems for the Manitou Concrete Trojan loader.

Art Mummery, Bob Miner, Norm Shaddick and company have finished bolting the dump body of Big Bertha, our converted Army 5-ton cargo truck spearheaded by George Knab. Only the hydraulic pump and plumbing remain to finish Bertha. Come spring you should see this truck hauling BIG loads of dirt from our excavating projects.

Joe Scanlon's D-2 bulldozer has the pony motor removed to replace the starting pinion clutch.

The pony motor on the CAT D-318 power unit sitting on the restoration building floor was recently put back to running condition by Joe Scanlon and Art Mummery. Plans are being made to put this pony motor on the CAT 12 grader donated by Herman Kreckic which has a bad pony motor. But since the engines are from different manufacturing series, some modifications must be engineered first.

Dick Bean continues to plug away at the Vitale BURRO crane. Art Mummery and Bob Mader recently went on a trade mission to a used truck parts yard in Buffalo and came back with the proper flywheel to mate up our replacement Detroit Diesel engine re-power unit. Watch this project come together quickly now!

The cast of eager volunteers has torn apart the engine on our venerable Ford 4000 forklift for a total engine rebuild, along with a recored radiator. Another unit which should go back together quickly now.

The year 2000 is shaping up to be a memorable one for achievements. And ... some BIG acquisitions are being looked at and negotiated at the present time .... stay tuned!

## Operation Life Saver

Dave Hulings is our Chapter representative with the NYS OLS operation and attends several conferences each year. He is assisted by several other Chapter members when giving presentations to area schools. We also coordinate activities with the Ontario Midland Railroad.

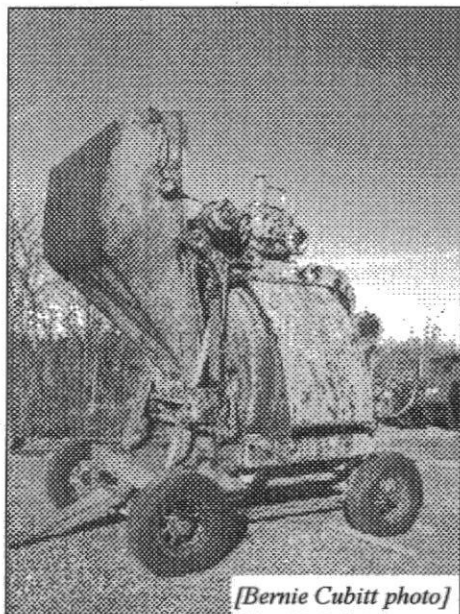
**Season Opens to Visitors April 30**

**Pancake Breakfast: May 6**

Details on Page 2

## CME Thoro-Mix Concrete Mixer

by Joe Scanlon



[Bernie Cubitt photo]

This 1946 Construction Machinery and Equipment Company concrete mixer was last used on a specialized concrete floor slab pour at the Kodak Elmgrove plant. Previously owned by the H.L. Baughman Company of Rochester, a large road building contractor until the 1970's, it was donated to our Historical Construction Equipment Museum by Mr. Don Lawrence of Rochester.

The mixer comes complete with a rebuilt 4-cylinder gas engine for power which had been removed and rebuilt and never reinstalled on the machine. The skip, located on the left of the machine, is lowered to the ground and dry cement and aggregates are dumped into it. The skip is then raised by a winch to the upper position, which dumps its contents into the mixer, where water is added and mixed concrete comes out the other side. A water reservoir is mounted on top of the mixer to add measured amounts of water to the drum. Once we find someone who will volunteer to put the unit back together we'll be able to make small batches of concrete for our projects the old fashioned way!

## 2000 NRHS Convention

The Annual NRHS Convention is scheduled for July 11-16 at Stamford, CT. The hosts are Western Connecticut Chapter. Pre-registration is closed, but ample space should be available for members wishing to attend. For information, write: New Haven Rails 2000, P.O. Box 1188, Southport, CT 06490-1188, or visit the Convention website at [www.nhrails2000.com](http://www.nhrails2000.com).

## Library Report

Charles Robinson, Chairman

The library is now changing to summer hours and will no longer be open on a Sunday afternoon until next fall.

As was the case last year, the library will be open for general use on the Monday evening after the third Thursday of the month. For the month of April, it will be opened on Monday, April 24, between 7:30 and 9:30 P.M. The staff is usually there every Monday evening for limited use of the library. However call the Library Chairman at 716-377-4245, or the library at 872-4641 on Monday evenings, to be certain that is open.

The most serious matter before the Rochester Chapter is putting new siding on the library and conference center building. We have received a \$3,000 grant from the National NRHS to do this work. Things are in pretty bad shape around the building and to put this off any longer could lead to more serious problems if we do not have them already. A meeting has been organized on April 3 to address this issue. Hopefully a fast start can be launched to insure prompt attention to the building. All our members should understand the need to carry out the repairs to this very useful facility.

Gale Smith has continued to organize and to list the important contribution of the Lloyd Klos collection as well as other donated books. He and Bob Miner have been copying one of Mr. Klos' fragile scrapbooks so that it will be available for research; it is collection of many articles appearing in Rochester papers concerning local trolley and interurban lines.

Bob Miner, Steve Oagley, John Stewart and Chris Hauf are also organizing our collection. Jerry Gillette is busy cataloging the Erie Railroad drawings (4 boxes of them!). More photographs have been removed from miscellaneous envelopes and have been placed in archival sleeves. An unusually outstanding assortment of Canadian National steam locomotive photos has been found among our collection.

Two copies of the Woodbury negative lists are now available for circulation. Two additional copies will be retained at the library.

We have recently received a number of copies of *Vintage Rails* plus a few other miscellaneous magazines from the estate of Curtis Boyer. We appreciate this donation to fill out our magazine files.

## Volunteers Wanted

### Printed Route Guide and Live Commentary for "Adirondack"

The National Railway Historical Society has joined Amtrak and the National Park Service in a partnership for providing printed route guides and, if possible, live commentary onboard certain Amtrak trains this Summer.

The first Amtrak train in our region to join this program is to be the Albany-Montreal portion of Trains No. 68 and 69, the "Adirondack." It is Amtrak's desire, at present, that a live commentary be provided during July and August.

Whatever level of service is ultimately provided, consistent availability will be essential to the program's success. It is realized that a large group of dependable, qualified volunteers will be required. It is hoped that the NRHS will become an invaluable participant from the very onset.

Your participation in this important program is invited. It would be exciting to be part of this effort to enrich the services of Amtrak in our part of the country.

More specific information as to scheduling, connecting transportation and overnight accommodations is available by contacting: G. Franklin Ackerman, Northeast Volunteer Program Director, NRHS/Amtrak/National Park Service Trails & Rails Partnership, 310 Chipman Park, Middlebury, VT 05753. Frank's phone number is (803) 288-8091, and his e-mail address is: [frank\\_ackerman@hotmail.com](mailto:frank_ackerman@hotmail.com).

[A press release from Geoffrey W. Gerstung, Vice President, Northeast Region, NRHS.]

## TEST TRACK:

This quiz is of railroad slang that is still used today.

- 1 - Highball.
- 2 - Big hook.
- 3 - Goat.
- 4 - Johnson bar.
- 5 - Pull the pin.
- 6 - Big hole.
- 7 - Gandy dancer.
- 8 - Grease the pig.
- 9 - Speeder.
- 10 - Drag.

Answers on Page 7. [Taken from *The Golden Spike*, Mar/Apr 2000]



**Tidbits****Rutland RR Historical Society Convention**

The Rutland Railroad Historical Society will hold its Annual Convention on May 6 & 7 at the Franklin Conference Center at the Howe Center, Strong Ave., Rutland VT.

Among the activities are model & RR displays, swap tables, discussions, tour of the former Howe Scale Works, a Banquet with slide show of the Rutland yards and 1945 trains on the Chatham Division. On Sunday, is planned an excursion from Rutland to Brandon on a Green Mountain RR train using ex Rutland RR RS-1.

For details, contact: Jeff English, 6 Lansing Ave., Troy, NY 12180-4829.

**Detroit's MC train shed demolished.**

The train sheds at Detroit's Michigan Central Depot were under demolition starting October 10, 1999. In their place will be constructed the new 17th Street Intermodal Terminal, which is expected to be ready in March, 2000. [*The Michigan Railfan*, Jan/Feb, 2000]

**BNSF 150th Anniversary Magazine**

To honor the 150 years of Burlington Northern Santa Fe Railway predecessors, the Company has published a special 32-page edition of their magazine. It includes many historic photos, a complete genealogy of the roads and histories of key predecessor railroads. It is available at \$5 each; order from BNSF Merchandise Store at 817-352-3946. Item #BST-298. [*Potomac Rail News*, March, 2000]

**Bluewater Chapter schedules 12 trips**

The Bluewater Chapter (Michigan) has scheduled 10 RR plus two by water excursions between March and December of this year; other trips are in discussion stage! [*Bluewater Sentinel*, Winter, 2000]

**The Tunkhannock Creek Viaduct**

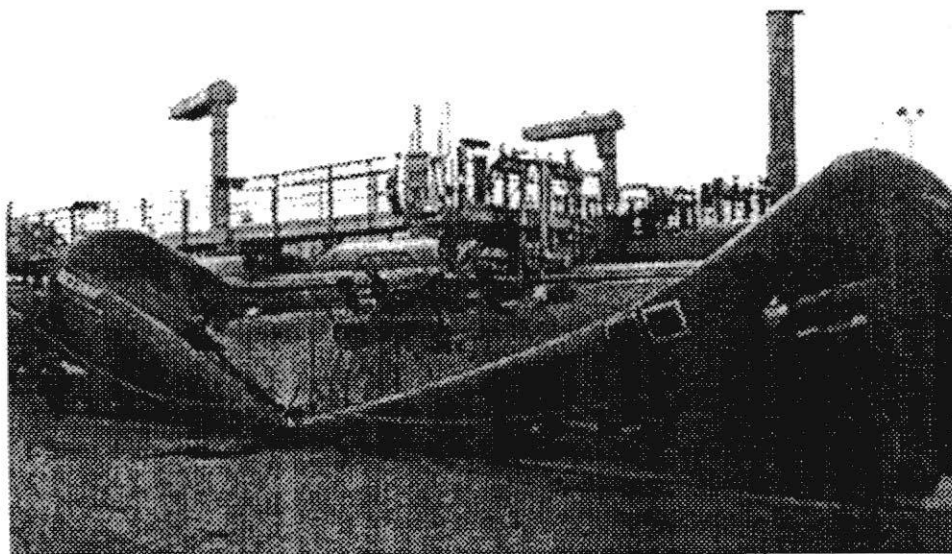
Central New York Chapter March issue of *The Green Book* features an article on the construction of the Tunkhannock Creek Viaduct with four illustrations of the construction. This issue will be in our library.

**Answers to the Test Track on Page 6**

1. - Signal waved by hand, lantern or given by radio from conductor to engineer when train is ready to leave. Originated from ball-like object raised to highest point by a stationmaster.

2 - A railroad crane.

3 - A yard engine. Originally 0-4-0's and 0-6-0's steamers, later smaller diesels, now

**What caused this tank car to callopse? (Answer below)****2000 Calendar of Special Events for Combined Museums**

**April 30 (Sun.):** Joint Operation Opening Weekend. Track car rides resume weather permitting.

**April 30 - May 28 (Sundays):** Casey Jones 100th Anniversary Commemoration (Details of this celebration are on Page 1)

**July 22-23 (Sat. & Sun.):** "Model Steam & Gas Engine Rally". Come out and see special displays presented by the Western New York Model Steam & Gas Engine Association. On tap is the NYMT's new calliope.

**August 19-20 (Sat. & Sun.):** "Diesel Days" The museums will highlight the diesel locomotive during this two day celebration with six operating diesels from the small 45-ton switcher to the large 1000 & 2000 HP road switchers. Locomotive rides are planned.

**Oct. 29 (Sunday):** Last day of Joint Operations. Track car rides end. R&GV RR Museum closes for the season. NYMT remains open from November through April at reduced admission rate.

hand-me-down GP-9's or even SD-40's.

4 - Reverse lever on a steam locomotive.

5 - To uncouple a car by pulling up the coupler pin with the cut lever. Also when resigning or quitting a job.

6 - Emergency position of the air-brake valve, causing a sudden blast of air and a quick stop of a train.

7 - Track laborer, track gang worker.

8 - To oil a locomotive before a run and at service stops.

**Schedule for Track Car Training: Combination, Class & Hands on:**

• Saturday, April 15

**Hands on:**

• Saturday, April 29

• Saturday, May 6

• Saturday, May 13

**All classes start at 9 AM at the Depot.**

Classroom sessions are about 1-1/2 hours. These will cover operating procedures, safety issues and related topics.

Operating sessions will involve actual operation of available track cars up and down the line.

Anyone interested should contact Jeremy Tuke at 359-8944. Anyone who cannot make a Saturday Training Session please call Jeremy. A Tuesday evening session can be scheduled for late April or early May.

*Answer to above photo:* This tank car was emptied when it was hot. The vent wasn't open so when it cooled off, it sucked in like a soda can. [*Gondola Gazette*, Jan. 2000]

9 - Gasoline motor car used by section men before advent of hi-rail truck.

10 - A slow, heavy freight train, such as a coal drag, contrasted to a fast-moving hot-shot.

Rochester Chapter National Railway Historical Society  
**The Semaphore**  
P.O. Box 23326  
Rochester, NY 14692-3326

Non Profit Org.  
U.S. Postage  
**PAID**  
Rochester, NY  
Permit #826

Chapter Meeting & Program:

**A Kaleidoscope of  
Modern Railroading**

by **Beth Krueger**

**April 20, 2000**

**40 & 8 Club**

**933 University Ave.**

Name 'Highlighted'? Membership has Expired! See Page 1

**The Semaphore** is published monthly by the Rochester, NY Chapter, National Railway Historical Society. It is mailed free to all Chapter members. Non-member's subscriptions are \$5.00 and run from January 1 to December 31. Chapter meetings are held the third Thursday and the Board of Directors meets the first Thursday of each month.

**Rochester Chapter NRHS Officers:**

*President:* Chris Hauf

*Vice President:* Steve Oagley

*Treasurer:* Ira Cohen

*Recording Secretary:* Jeremy Tuke

*Correspondence Sec.:* Don Shilling

*National Director:* Bob Miner

**Trustees:** Dale Hartnett, Charles Harshbarger, Dave Luca, Joe Scanlon, John Stewart and John Weber.

**The Semaphore Staff:**

*Editor:* Gale Smith

*Printing:* Bob Miner/Gale Smith

*Mailing:* Dan Cosgrove

Contributions to **The Semaphore** are welcomed and encouraged from all readers. They should be mailed to: Gale E. Smith, 299 Seneca Park Avenue, Rochester, NY 14617-2433. Phone: (716) 544-6221. Contributors using a computer are asked to send their submissions on any MS-DOS diskette in ASCII or TXT format, as well as a printed copy. **Deadline: First Day of Each Month.**

**Pouring the Restoration Facility Floor!**

The Restoration Building is up and running! Now we need to provide it with a concrete floor. We raised the dust to finish the space. Now we're faced with dust all over the place. One hundred dollars will buy a batch of concrete. The estimate for the floor is \$25,000; we'll need about twenty-five batches. Help "cement" together a great project. Maybe we'll even let you write your name and date in a slab. [Don Shilling]


InterNet (World Wide Web) address:  
<http://www.rochnrhs.org/>