



The Semaphore

March 1996
Volume 38
Number 7

Newsletter of the Rochester NY Chapter, National Railway Historical Society

Program: March 21

Member's Participation Night

The next membership meeting will be held at the 40 & 8 Club on March 21. The program, titled "Membership Participation Night", will be slide presentations by volunteer chapter members. Plan on bringing a small selection of slides (approximately 15-30) to share with the audience. In honor of the upcoming 25 year celebration of our Chapter ownership of the depot, please bring any depot slides you may have covering the past 25 year history of it's restoration. We would also appreciate any older depot slides depicting operation under previous railroad ownerships in bygone days.

(Committee on Pg 7)

News about the

Silver Anniversary fund raising drive

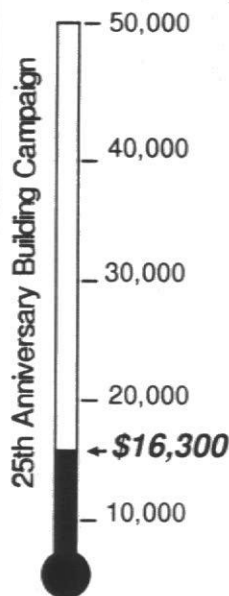
by Don Shilling

There's some good news and some bad news:

First the good news ... Thus far we've raised over \$16,000! That's 32% of our goal, not a bad start .. but wait,

Here's the bad news:

Only 23 donors have contributed to the fund raising campaign. That's just 11 percent of our over 200 members. That means that you and I



(Cont'd on pg 2)

The Depots at Industry

As we approach July when the Silver Anniversary Celebration begins, it may be interesting to look at what was on the site of our present depot.

Below is the present depot building but with a freight house at the rear. It's not apparent in this scanned photo, but the original shows two catenaries overhead.

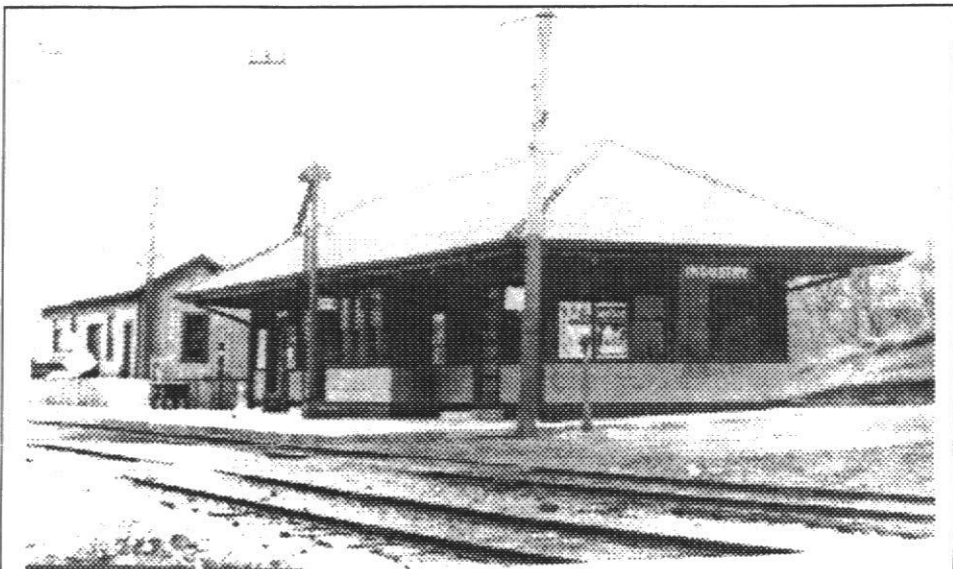
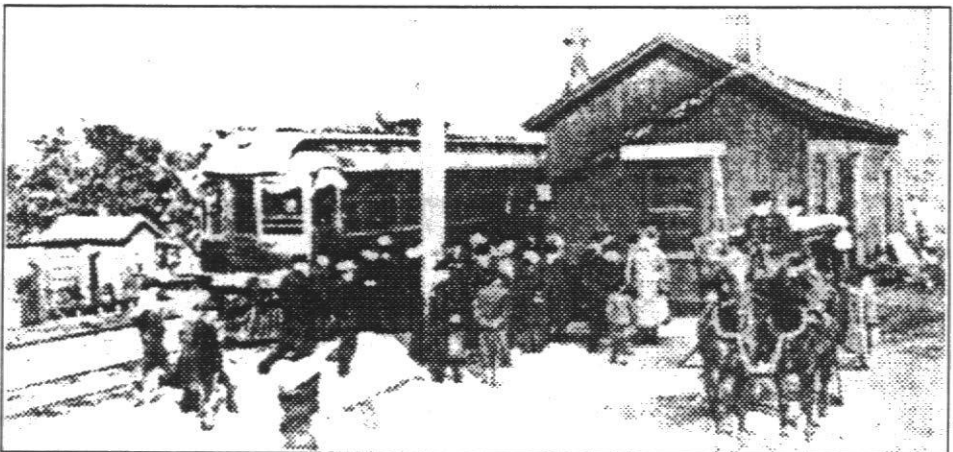


Photo from Rochester Chapter, NRHS Archives



"Station at Industry"

Photo from Mary Hamilton-Dann's collection

This view shows the apparent original depot constructed around 1853 when the Rochester and Genesee Valley Railroad was first laid out. It was replaced with a new structure in 1909. This narrows the date of the photo as the Erie electrified this line in 1907. The car has a pantograph, and there is a second set of tracks. This building structure is similar to the 'freight house' in the first photo, which confirms the belief that the original depot was moved north allowing for the 'new' Depot at Industry --- and the basis for our R&GV RR Museum! Our thanks to Mary for finding this in her collection and sending it to the editor.

News about.... (Contid from Pg 1)

probably haven't given any of the suggested \$200.00 we need from each of our members. The committee estimated that if each of 200 of us gave 200 dollars then we'd have almost enough to pay for the construction of the renovation/maintenance center/winter wooden caboose storage/trolley 60/library building that we've urgently needed and dreamed about for so long.

There's only four more months until July and our scheduled ground-breaking date. We know how swiftly that time can pass.

MORE GOOD NEWS: If you have a Master, Discover or Visa charge card you can use it to charge your donation to the Rochester Chapter NRHS. How about an almost painless, 50-dollar contribution, over each of the next four months? That's not a bad idea and remember, it'll still all be tax deductible!

How about it Bob and Bud and John, Joe and Jane and Bill and Phil and Mac and Mark and Jim and George and Dick, Dave and Dan and Don and Ron and Jack and Gerry and Ed and Fred and Mike and Mary and all the rest of you splendid railfans?

Silver Anniversary Plans Take Shape

Dates are July 18 thru 21

The Celebration begins with our usual summer chapter meeting at the Depot on Thursday evening, July 18. Other events are being planned for Friday, Saturday and Sunday. Among them is the 'groundbreaking ceremony' for the new building.

Put 25th Anniv. in Print?

It has been suggested that visitors to our Depot Silver Anniversary Celebration should get a printed program documenting the event. Is there anyone in the Chapter who would oversee this project? There isn't much time. The call above for photos by Chris Hauf may be useful.

Museum publicity

Call for photographs and information

With the 25th Anniversary rapidly approaching, we have several projects going on to help publicize the anniversary including magazine articles and our Internet World Wide Web homepage. Currently, submissions are being sought by Chris Hauf (381-8583) of photographs of events at the depot over the past 25 years as well as information in general on milestones, interesting happenings, special events, etc. over the past 25 years. All photographs will be returned if properly marked.

This is a great milestone we have achieved, and it certainly would be nice to share it with others, so please contribute and contribute soon. We are a little over 4 months from the anniversary date! The better the coverage of the past 25 years, the better the response we will get to our publicity efforts. So dig out those shoeboxes and those little yellow boxes and take a look to see what you may have. Your help will be greatly appreciated.

Chapter's Library

The Library committee, under the guidance of Bonnie Glickman, has met several times. The present emphasis is documenting exactly what we have. Now comes the main problem: how to make these items accessible to our members and researchers! The problem? Space!

In the meantime, the committee could use a donation of several folding chairs. Contact Dave Luca, 288-0318, or Bonnie, 288-8747.

Where is Redfield's Film?

Back when, Clyde Redfield shot a movie film from his engineer's seat on the Lehigh *Black Diamond* on a Buffalo to Geneva run.

Mary Hamilton-Dann wishes to know its whereabouts; is it in the NRHS archives? Anyone know?

Track Car Training - 1996

The dates for Track Car training are:

March 23 & 30: Classroom only

April 6: Classroom and Operator qualification.

April 27: Operator qualification only

May 4: "Catch all" session

All sessions start at **9:00 AM** Sharp.

Contact Jeremy Tuke at 359-8944 if you have any questions.

Save this Date: June 1

Reservations have been made at the Rochester Brew Pub for the upcoming **Annual Banquet** for Saturday, June 1

The Guest Speaker has not yet been announced.

Membership Report

Thomas A. Way, Chairman

Change of Address:

Christopher R. Hauf
28 Candlewood Dr.
Pittsford, NY 14534
381-8583

Notes & Tidbits

INSUFFICIENT FUNDS!

Remember: Add both your National and your Local Dues together to get your total. You can not maintain a membership with the Rochester Chapter without there being a National affiliation.

Reminder:

Although the 1996 Dues Notices were late from National, the Discount Period expired on February First.

Present Membership Tally:

Full National at Rochester	156
Elsewhere + Rochester	8
Family	19

Chapter Historian desired

Keith Blackall, because of new job responsibilities and living in Sodus, desires to step-down as Historian.

If interested in this position, call Keith at (315) 483-6089, or Dave Luca, 288-0318.

Rochester & Genesee Valley Railroad Museum

by Rand Warner, Chairman, 425-8587

General

This is our 25th Anniversary Year for the Rochester & Genesee Valley Railroad Museum. If you would like to help in the many planned celebration activities, please call Don Shilling 381-3171 or Dave Luca 288-0318.

We try hard to keep track of all the many donations to our Museum. You can help if you'll be sure to always enter your donations in the log book we keep at the Depot.

Our joint exec committee meetings, held each month with New York Museum of Transportation, are yielding significant improvements in our total visitor experience, and total community visibility. Your inputs and suggestions are always welcome -- to Dave Luca, Bob Miner, Rand Warner, Don Shilling, Ted Strang or Jim Dierks.

We are planning to integrate the new passenger loading area, constructed late last year at NYMT, with the existing passenger loading track on the south side of the NYMT barn, for improved flow of our visitors/riders. This improvement will require considerable focus, energy and priority on associated tracks and switches.

Outreach Opportunities

With our unique Museum complex location in Rush at Industry, we have many opportunities for outreach to help others as we help ourselves. Some of these interfaces are already established; others are in work or pending. Some examples are --

- BOCES #1 Rush Campus
- New York State Department of Transportation
- NYS Division for Youth/Oatka Residence Center
- NYS Division for Youth/State Ag & Tech School

- Antique Construction Equipment Historical Society
- Joint Engineers Training Fund
- Navy Reserve Seabees
- Army Reserve Engineers
- Antique Fire Apparatus
- Antique Truck Historical Association
- Horseless Carriage Society
- Horsedrawn Vehicles Association
- Lehigh Valley Trail/Town of Rush
- Genesee River/PRR Trail Group
- Apprentice Union Training Program

If you are interested in further developing any of these interfaces, please call Rand Warner, 425-8587, or Dave Luca, 288-0318, or Joe Scanlon, 392-8841.

Steam Locomotive Operation

We are hoping to have access to a small, operable, steam locomotive for this, our 25th Anniversary celebration year. If you'd like to be a part of this effort call John Redden, Dave Luca or Rand Warner.

In addition, we are evaluating leads and options for acquisition, restoration and maintenance of other small to medium size steam locomotives for possible operation on our Museum railroad and/or other local area railroad excursions. Call Rand Warner, 425-8587, if you have any info or interest regarding this project.

Electric Trolley Operation

Our joint NYMT/NRHS Electrification Committee has held a series of meetings to plan and define an electric trolley operation between our two museums. The initial project, to be started for this, our 25th Anniversary celebration year, is to begin construction of the first 1000 feet of overhead, starting at the NYMT end. We have on hand the overhead wire and fittings, and a utility line truck for installation support. We are now rounding up

poles, rail bonding hardware, power supply, and feeder cable. Trolley Sweeper C-130 at NYMT, is closest to operational readiness, and has some passenger carrying capacity. Call Rand Warner, Jim Johnson, or Neil Belenger if you'd like to help.

VISIONS

In time, we hope to offer our visiting public a variety of rail related ride and non-ride experiences; including steam, diesel, and gasoline locomotive hauled trains; trolley cars of various types, and self-propelled cars such as doodlebugs.

Interactive exhibits such as interlocking plant tied in with semaphore signal, and participative operation of model railroads in various gauges, are some examples of non-ride attraction to be developed.

Adjunct displays of antique trucks, fire apparatus, construction equipment, autos, and carriages have already started and can be further developed in time; offering additional education, interpretation and hands-on opportunities for our total visitor experience.

Development Committee

We are forming a Development Committee. This Committee will be concerned with matters of financial, physical, and personnel development for our Museum. If you would like to be involved with this effort, which is very important to our growth and future, please call Rand Warner at 425-8587 for more details.

Train Operations

Supt. John Redden, 594-2227

Recent Progress:

Jeremy Tuke has plans laid out for track car operator training prior to start of 1996 season in May.

John Redden is integrating locomotive and train crew rule books, training and certification procedures, via our Operations Committee.

RG&E loco #1941 and Erie Caboose #254 made the first coupled train trip,

around the loop clockwise, at the NYMT barn, on Saturday, February 10, without difficulty.

Cars and locomotives have been relocated, per our 1996 season operating plan, by John Redden, Norm Shaddick and Eugene Redden.

Plans for 1996 Season Year

Integrate some occasional locomotive hauled caboose trains, for revenue passenger service between our two Museums, along with our regular track car rides.

Continue to refine all training and safety activities.

Develop detailed schedule rosters for track car operators and train crews.

Continue development of log notebooks on safety, training, locomotive maintenance, track maintenance, and track car maintenance.

Visitor Operations

Supt. Don Shilling, 381-3171

Recent Progress:

Visitor/tour guide/docent training activities, schedules, and documentation have been developed by Don Shilling for implementation before opening day.

Outdoor display/location plan developed with Operations Committee for placement of motive power, rolling stock, storage of cars, restoration projects, and maintenance-of-way equipment.

Plans for 1996 Season Year:

Integrate 25th Anniversary Celebration events into total visitor experience, depot indoor displays, and various outdoor area displays of equipment and artifacts.

Develop detailed schedule rosters for weekday and weekend tour hosts for regular and special activities.

Prioritize special emphasis construction, repairs, painting or cleanup activities for completion before season opening.

Track & Right-of-Way

Acting Supt. Rand Warner, 425-8587

Recent Progress:

Obtained pallets for sorting and storing track parts.

Inspected trackage options to support new restoration barn.

Inspected track options for further expansion north & south.

Inventoried potential track salvage opportunities for materials.

Plans for 1996 Season Year:

Repair of all three NYMT switches and switch stands.

Rehab of NYMT passenger loading track.

Extend Track #7 for storage capacity

Rehab frog at Switch #6.

Level west rail of main line between Switch #6 and Scanlon Curve.

Lay out passing track north of Reid's Crossing

Lay out new tracks for new restoration barn.

Remove kinks in rail joints at NYMT - for train operation.

Grind high spots in rail joints at NYMT - for track car operation.

Buildings & Grounds

Supt. Dave Luca, 288-0318

Recent Progress:

Reviewed options for construction and location of new building.

Reviewed options for facility and location of new library.

Insulation for depot attic acquired by Charles Harshbarger, and installation by Charles Harshbarger and Jim Johnson underway.

George Bauerschmidt & Co. may have finally found the exit routing of our storm drain at depot - after 25 years of looking !!

Options for increased land holdings and access are being investigated for various facilities.

Plans for 1996 Season Year:

Clean up and spruce up buildings and grounds for season opening and 25th Anniversary Celebration.

Improve drainage from Depot basement.

Redo concrete floor in Depot basement.

Extend grading northward on west side of Conrail.

Excavate level area for new restoration building.

Begin restoration and relocation of NYC RR crossing shanty.

Bring in hexagonal concrete telephone shanty.

Pour additional concrete replacement slabs on walk in front of Depot along Conrail main.

Consider options for improvement of passageway at NYMT barn.

Consider possibilities for covered loading platform at NYMT.

Motive Power

Supt. John Redden, 594-2227

Recent Progress:

Block heaters operational for all five diesels.

Battery chargers operational for all five diesels.

Fuel, lube, inspection and log program underway for all five diesels.

Our three diesels with year round anti-freeze, have all been in use at various times over the winter months, thanks to our motive power crew.

Plans for 1996 Season Year:

Rehab brake system on RG&E #1941 - engine brake, automatic brake and parking brake.

Repaint deteriorated areas on EKC #6, and correct fuel gelling problem.

Rehab electro-pneumatic relays on Army #1941.

Start up and inspect LV #211 for 25th Anniversary Events.

Start up and inspect NKP #79 for 25th Anniversary Events and work train service.

Communications, Signals & Power

Supt. Neil Bellenger, 359-9985

Recent Progress:

Signal equipment inventoried by Mike Dow, John Redden, Rand Warner and others.

Relay case wiring for hill block signals almost finished by Mike Dow.

Neil Bellenger placing additional 1/10th mile markers along right-of-way.

Expanded base station radio equipment developed at Depot by Dick Holbert. Radios repaired. FCC license renewed.

Expanded PA system developed at Depot by Jim Johnson.

Expanded outdoor power distribution system and conduits for communication and signalling installed along east side of Track #5 by Jim Johnson and Charles Harshbarger.

Plans for 1996 Operating Year:

Develop an interactive signal display at NYMT barn, mounting semaphore on indoor pole, linking to interlocking plant panel already in place inside barn.

Implement another block circuit going north from Switch #6, including another signal.

Begin construction of electric overhead system for trolley operation, starting from NYMT barn lead switch.

Move utility line truck to NYMT to set trolley poles, starting in May.

Acquire bonding equipment and materials for trolley electrification project.

Engineering

Supt. Jim Johnson, 467-1672

Recent Progress:

Continued progress in organizing volunteer technical library.

Plans for 1996 Season Year:

Map out entire grounds as built showing all tracks, utilities and other infrastructure.

Install two more four-drawer files in engineering area of Depot to contain museums functional technical files.

Maintenance of Way

Supt. Norm Shaddick, 865-2773

Recent Progress:

Bob Mader is developing air brakes, other accessories, and MU air brake system for our track motor cars and trailers.

"Madermobile" and "Roemobile" track motor cars approaching operational readiness for backup unit status.

Track Motor Car TC-2 getting lots of TLC from Norm Shaddick.

Track Crane Car and Crane Tender Car getting into first class shape by Jeremy Tuke and Bob Miner.

Track Motor Cars TC-2 and TC-3 and TC-4 have all been operational throughout the winter months -- a credit to all our M.O.W. crew.

Plans for 1996 Operating Year:

Rebuild B&W track motor car into 3rd crew trailer car.

Consider adding roof to trailer car #2 for sun & rain protection.

Install metal roof on Roe Bros. track motor car.

Consider rings and valves for TC-2 or possibly a different motor.

Install replacement metal roof on Ker-shaw snow brush.

Fix Jackson tamper so jacking capability can be used.

Tool Car & Shops

Supt. Charles Harshbarger, 266-8339

Recent Progress:

New benches and shelving installed in north end of tool car.

Looking for RR shop buildings and support equipment.

Exploring options for layout/location of turntable, roundhouse, sandtower, water tower, machine shop, etc.

Storage cabinets installed and organized for consumable supplies in De-

pot north waiting room and baggage rooms, and in tool car.

Plans for 1996 Season Year:

Integrate plans for new restoration building (from Capital Fund Drive) into overall long range shops vision.

Set up outdoor steel storage racks for storing lumber, pipe, steel shapes, etc.

Passenger Equipment

Supt. Bob Miner, 671-3589

Recent Progress:

Side panels on east side of Stillwell coach are being removed by Bernie Cubitt. New side panels for east side and all windows sills being fabricated by Dave Behnke. Chuck Whalen and Rick Isrealson working on interior. Chuck Whalen is project foreman.

Rehab plans for excursion train set for 1996 season.

Dave Luca working on *Pine Falls* interior and running gear.

Plans for 1996 Season Year:

We have located 40 Erie Stillwell Seats!! How about some "Stillwell Seat Sponsors" ala "Partners in Panels?" \$100 each with shipping. Make your checks out to Rochester Chapter, NRHS, and send to Ira Cohen, attention Stillwell Seats.

Resurface roofs on B&O Tool Car and *Pine Falls* and finish roof sealing on Stillwell coach.

Begin roof and side panel repairs on *Pine Falls*.

Determine a method of fabricating new curved ceiling panels for our old style coaches.

Chapter Store Replacement Needed

Duncan Richards will be relinquishing his post as 'Storekeeper' on May to devote more time to his family. During his tenure, the Chapter's Store has expanded substantially and been visible at many events. Thanks Duncan for your efforts.

Call Duncan at 235-5329.

Freight equipment

by Chris Hauf, Supt., 391-8583

Recent Progress:

- Removal of interior wood paneling in PC transfer caboose to facilitate repair of interior damage caused in rollover.
- Installation of hasps and locks on Erie caboose closets to protect contents and provide additional security.
- Photographic documentation of NYC flat car to aid in research of car's history.
- Additional historic information on any of the freight cars or cabooses is currently being sought. Please contact Chris Hauf if you may have something to contribute.
- Exploratory surgery on BR&P caboose to help in determining a plan for restoration.
- Movement of B&O and PC cabooses to yard lead for ease of access for restoration efforts.

Future plans:

- Interior and exterior restoration of PC caboose for use in hauling passengers between the museums.
- Fabricate and install new windows on Erie caboose before season opening.
- Formulate plan and begin restoration of BR&P caboose back to its as built appearance.
- Create detailed history files on every freight car and caboose for future use in restoration and education.
- Work on interpretive displays about freight cars and cabooses for viewing by the general public.

Construction & Equipment

by Joe Scanlon, Supt., 392-8841

It won't be long now and the crane booms will be swinging out at the depot for the 1996 season! Plans are being made to move the D-7 bulldozer and one of our shovels (pick one!) up to the site of our planned restoration/display building to begin rough grad-

ing as soon as weather permits.

We will also continue excavating for the equipment display area west of the Conrail track going north, to obtain more storage space. The parking area south of the Flexi-van trailer will be graded off for visitor parking again.

There's plenty of heavy equipment maintenance to be done this year, and hopefully we can repaint a couple of pieces this year. We can use your help, and if you're interested just contact Joe Scanlon, Rand Warner or George Knab.

The 1996 season should also bring us some interesting historical construction equipment acquisitions. Stay tuned for further news!

Wanted

- Info on gas or diesel electric doodlebugs or RDC's.
- Air jacks for passenger trainset maintenance.
- 5-ton or 10-ton Port-Power hydraulic jacking set.
- Interchangeable box car to support parts for excursion train.
- Diesel generator 480v, 3-phase, 200 kilowatts or higher.
- Skid Steer loader, Bobcat or equivalent, running.
- Feeder wire for trolley, #4-0 or larger, 1000 to 10,000 feet, copper.
- Seat frames and cushions for Erie Stillwell early series coach.
- Power supply, diesel, 250vdc, 100-200 amp for operation of Erie Lackawanna MU Power car.
- Diaphragms or material for excursion trainset.
- Pair of operable MCB-series standard gage trolley trucks.
- Overhead travelling crane 2 to 10-ton, free for hauling.
- GP-38 rectifier assembly to power trolley line.
- 20 power poles, 30-40 ft. long for trolley overhead.
- Sponsors for rehab of B&O to BR&P caboose #C-2603.

For Sale

Construction Equipment:

Contact Joe Scanlon, 392-8841

- Bay City Model 37 front shovel crawler excavator, gas
- Caterpillar D-2 bulldozer, diesel
- Ford 4000 Industrial forklift tractor, gas
- Towmotor 6000# forklift, propane
- Rome road grader, diesel
- Link Belt LS-90 crawler crane, diesel

Surplus Materials:

Contact Rand Warner, 425-8587

- Outdoor steel fuel tanks, 250 gallon, steel
- Landscape RR ties
- Landscape RR switch timers
- Scrap steel
- Scrap batteries

Thanks to ----

Chuck Whalen for grinding wheels.

Charles Harshbarger for kerosene and gasoline (over & over), garbage bags, antifreeze, new office chairs, 12-volt batteries, roof tar brushes, hot & cold cups, towels.

Leonard and Raymond Roe for lumber for track motor car and tarpaulin, and structural steel, two new fire extinguishers, and starter, fuel filter, battery, lumber for track motor car.

Jim Johnson for kerosene, Allen wrench set, two new office chairs, wireless intercom, case of oil, conduit.

Neil Bellenger for gasoline, signal locks, plywood, form lumber, hardware, welding clamps.

Bob Mader for 55-gallon drums, chimney tile, hardware tools.

Ira Cohen for copy paper.

Raymond Roe for 1/4-inch electric drill.

Norm Shaddick for antifreeze, grease, lube oil, filters, fuel pump and hoses, electric hot water heater,

(Continued on next page)

Thanks to --

(continued from previous page)

water pump lube, insulation, antifreeze, fuses, diesel fuel conditioner, cement, soap, exhaust pipe, wasp spray, couplings, gages, mower parts, typewriter, plastic sheet, filters, belt cleaner.

Chris Hauf for underwriting upholstering of caboose seats, stove paint.

Dick Holbert for steel structural shapes, two-way radio crystals, base control units, radio repair parts, radio license renewal.

Tom Phillips for industrial heat gun.

Jeremy Tuke for case of hornet spray, track car parts.

John Redden for gasoline, spark plugs, paint, radio knobs, water pump hose, antifreeze.

Dave & Jan Luca for Christmas lights and decorations, hardware, kerosene fuel, tools and ticket stock.

Dave Luca for antifreeze, wasp spray, Sackrete, water plug, sponges, pails, copy paper, plastic window cleaner, drain cleaner, calculator, phone, plants, boxes, picture frame, card stock battery, timer, postage, hardware, keys, paint, goggles, posted signs, gasoline, tractor mower parts, hydraulic oil, store bags, posters, septic cleaner.

Rand Warner for track car manuals, tools, hardware, antifreeze.

PRR organized 150 years ago

On April 13, 1846, the Pennsylvania Railroad was chartered. The reenactment of this signing will occur at 10 AM in the State Capital Rotunda, Harrisburg.

At least ten other special events are scheduled throughout 1996 at various places in Pennsylvania.

For a complete listing of events, write to: Robert L. Emerson, Director, Railroad Museum of Pennsylvania, PO Box 15, Strasburg, PA 17579. Phone (717) 687-8628, FAX (717) 687-0876.

Manchester Wreck

Our Chapter member, Mary Hamilton-Dann authored a researched article in the most recent *NRHS Bulletin* (Vol 60, No. 6) on the wreck on the Lehigh Valley RR at Manchester, NY in 1911. Unusual for a strictly RR story is the incorporation of the activities of numerous people just before and after this accident.

Besides pictures of the wreck, there are views of related railroad property which are of historic value. So if you haven't read this story, you may want to retrieve that *Bulletin* copy.

Another item in this issue, is a favorable review of NRHS/NYMT's recently released Souvenir Booklet. It sells for \$5 at the NYMT gift shop or at NRHS' monthly meetings.

New RR Museum in State to Open

On July 4, Robert Groman will open his railroad museum in Sandy Creek, NY. It will be dedicated in the memory of Rail City Museum.

Researcher looking for heavy-weight Pullmans

Rev. Herman Page of the Topeka Chapter, NRHS, PO Box 5167, Topeka, KS 66605 wishes to publish an article on the various existing heavy-weight Pullman cars.

To date he has found 140. He stated that he remembers seeing a couple in a museum south of Rochester, but doesn't remember the place. If you can assist him, do send off a note.

NRHS member researching canteens

Capt. William Fischer, USAF, who is a 20-year member of NRHS is researching the role of railroad canteens that supported WWII war effort.

He is interested in hearing from canteen workers, former servicemen to utilized the facilities, railroad workers, and others familiar with them.

His address: Capt. William E. Fischer, Jr., PSC 450 Box 213, APO AP 96206-0213.

NYMT Schedule

May 19: Transportation Day

June 16: Phoebe Snow Day

July 14: Antique Truck Show

Aug 10 & 11: Gandy Dancers

NYMT is open every Sunday from 11 am to 5 pm NYMT will also be participating with us in the 25th Anniversary Celebration.

Railfan Trips: There and About

The **Middletown & Hummelstown Railroad** (PA) will operate a 'mixed' train on Saturday, May 11 starting at 11:00. Info: M&H Railroad, 136 Brown St., Middletown, PA 17057.

The **American Orient Express** will have a busy summer with 15 trips scheduled between March 23 and October 8. Six are 8-day Great Transcontinental Journeys between Los Angeles and Washington, D.C.

For more information, contact TCS Expeditions of Seattle, Washington at 800-727-7477 or 208-882-7907. Source: *Railfan & Railroad*, Feb. 1996, pg. 46. This issue contains a 4-page article on the Express.

Rochester Board of Education honors Lewis E. Bracey

Chapter member Lewis E. Bracey was honored by Rochester Board of Education on Feb. 15 for his work as writer, photographer, veteran and unassuming documenter of Rochester's African American history. His dedication "have helped provide a link to the past and a bridge to the future".

Program Committee

Jack Matsik (Chairman)	442-6269
Bill Limburg	586-9470
Dan Cosgrove	352-6931
Dave Luca (Board liaison)	288-0318

The Committee welcomes suggestions and ideas for future programs at forthcoming meetings at the 40&8 Club. Just contact any of the above committee members.

ALL ABOARD the *NET EXPRESS!!!*

by Mike Byrne

Part II, continued from Feb. 1996 issue

On-line Services

To get on line you will need to have some kind of communications software. I can make all kinds of suggestions, but for the beginners I would recommend you get hooked up with an on-line service such as America On Line or Compuserve. I have tried both and personally like America On Line, it is the largest growing service and is very user friendly. On line services provide many things including electronic mail (e-mail), Internet access (WWW and Newsgroups), and self contained resources such as on-line business week and encyclopedias.

Most services offer you 10 free hours to check it out and if you decide it is not for you, you cancel. If you decide you want to use America On Line, give me a call and I can explain more. AOL costs \$9.95 per month and you get 5 hours of service and after that it is \$2.95 per hour.

I have a special connection that is called a Point to Point (PPP) connection through a service called interramp. I use this in addition to AOL because it allows me to use a program called NETSCAPE to access the web. NETSCAPE is an advanced WWW interface that allows a number of options that AOL doesn't have. They charge \$1.50/hour for their connection (min. of 9 hours per month). I use it to access the WWW and my newsgroups.

Newsgroups

Newsgroups are sort of like a bulletin board. They allow people to post messages and then people will post answers or responses. The groups are broken down by category which makes it easier to find what you want. At the end of this article I will mention all the railroad related Internet resources I have found.

World Wide Web (WWW)

The WWW is an on-line hypertext publishing system that has certain

words that can be highlighted and will link you to other programs. To reach a site you need to know their Uniform Resource Locator (URL); this is sort of like their address. Most look like this <http://www.rochester.ny.us>. To access them you use a go or open command and type in the URL and hit enter. At that point the computer goes out and talks to the other computer and loads in their information temporarily. This info only stays while your computer is on. Once you exit the connection it is lost. The links are similar to tunnels leading from one point to another. The WWW allows you to hop from one computer to another by choosing new links as they appear. The nice thing about the WWW is the fact that it has a very nice user interface (in other words it is easy to use). The WWW has lots of graphics and almost looks like a magazine as you hop around. The NRHS Rochester and the NYMT are on line along with many other museums and businesses. The nice thing about the WWW is many sites (computers) provide links to other sites with similar interests so you don't have to spend all day searching. My daughter needed information on Blue Whales and within five minutes I was connected to the whale watchers sites in Australia and printed out 4 pages of in-depth information. While I was in their site, I linked to Sea World in Florida and printed out more info and a nice photo of a blue whale. All this only costs me \$1.50 per hour with my interramp connection. My total time on the net to find this info was less than 30 minutes. The amount of RR info is phenomenal, from RR clip art (sketches) to The monthly Conrail Newsletter, and off to a in-depth discussion of E8 engines. All kinds of info and photos available 24 hours a day.

E-mail

Electronic mail allows you to send information to anyone who also has a

E-mail account. In order to send the info you need to know their address. Once you have that the hard part is over. To send a message you get on-line, open your e-mail account, type in the address, type or paste your letter and send it. That's it; it's gone. The nice thing is that you only have to type it once and you can send the same thing to 2,3 or 100 others! I send messages to Dave Luca, my wife (at work), and my sister in Florida and it only costs me my hourly charges. The best way to save money is to write your notes off line on a word processor and then paste them in later. I am currently working with chapter members Chris Hauf and Naor Wallach on a project and all three of us are working at our own homes and sending the info by e-mail to each other.

You can use e-mail to; send text messages to others, attach computer files to messages, send to multiple recipients, reply to messages sent to you, forward messages to others, subscribe to electronic mailing lists, and post messages to newsgroups.

One small warning, your mail is not private and others may be able to read it as it gets transmitted. Always keep this in mind when transmitting information

I briefly mentioned electronic mailing lists and want to explain them better. There are certain computers called listservers that exist on the Internet. These list servers keep a list of names subscribed to specific lists and forwards mail to everyone on the list. They are great for people with similar interests. I am on one for railroads. Whenever someone wants everyone to see a message, they send it to the list server and the list server forwards it to the group. To subscribe, you need to know the address of the listserver and the name of the list you wish to subscribe to. You send a message and just say "subscribe

"listname" "yourname"" (don't include the quotes). It is a bit complicated the first time so try and get some help from someone who is familiar.

A e-mail address is made up of three parts, the user name, domain, and top domain. My address is is000096@interramp.com. My user name is is000096, my domain (computer server) is interramp, and my top domain or type is com. The com stands for commercial, others are edu for educational, gov for government, and org for non profits.

That's it for e-mail, I'm sure I may have confused you so I really recommend you read that TRAINS article from September 1994 on page 44 by Jim Zeirke. The other thing to remember is services such as AOL also include books that help to explain the Internet in detail (I recommend you purchase one).

RR related net services

Here is my list of RR related resources, if you want to forward your e-mail address to me please send it to is000096@interramp.com and I will print a directory at some future time.

WWW sites (don't use the quotes!)

"http://www.rochester.ny.us/railmuseum.html" this is the Rochester and Genesee Valley RR museum.

"http://www.history.rochester.edu/class/rrmuseum/museum.html" this is the NYMT site.

"http://www.injersey.com/media/lifeatures/aott" this is a site called ahead of the torch and has a lot of nice feature stories about regional railroads and trips.

"http://anansi.panix.com:80/userdirs/ni2p/tour/" This is an all inclusive list of railroad museums and info on each.

"http://www.amtrak.com" Amtrak's site, can't order tickets though!

"http://www.wpi.edu/~elmer" Andrew Toppan's great RR and Ship site.

"http://www.mcs.com/~dsdawdy/cyberoad.html" Dan Dawdy's links to all kinds of RR sites. This is the best of the best.

Newsgroups

"Misc.transport.rail.americas" This is the only RR related newsgroup I recommend you subscribe to. It gets over 100 notes posted each day. The notes include info re current US RR events and questions and answers. I find this very interesting and recommend everyone subscribes to this list.

Mailing lists

"The Railroad List", to subscribe send a e-mail message to "listserve@cunyvm.cuny.edu", no subject is needed, the first line of your message should say "subscribe railroad yourname". Don't put the quotes in, and substitute your actual name (John Doe) for yourname.

"Railnet Railfan list", to subscribe send a message to "listserve@railnet.n-shore.org", no subject needed just have the first line say "join railfan".

As porky pig says..... That's all folks!!! Hopefully you will decide to go on-line and join the fun. If you need any other info, drop me a e-mail or give me a call.

Mike Byrne (is000096@interramp.com or 716-225-5659)

Can you identify this photographer?

Can anyone identify the photographer of the December 1996 photo in our Chapter Calendar, which shows a Pennsylvania steam locomotive?

There is an interesting mysterious story possibly linked to this photo, which can be solved if the photographer can be positively identified.

Do you have the key to solve the mystery? If you do, contact Joe Scanlon at 392-8841.

Silver Anniversary Committee

Members planning the Grand Silver Anniversary Celebration are: Don Shilling, Chairman, Rand Warner, Dave Luca, Steve Oagley, Bob Fitch, Keith Blackall and Larry Fennessy.

FROM THE INTERNET

Contributed by Mike Byrne

For the week ending February 4, Conrail traffic units were down -5.9%, and the year-to-date was down -9%. (Ed. Probably reflecting January's snowy weather?) From *Conrailnews-wire*

From Al Turner <dannyb@access2.digex.net>

For the 4th quarter, Kansas City Southern's operating income dropped 23%, while Railtex was up by 27%.

Conrail announced the following rail corridors for sale:

Battle Creek-Jackson-Ypsilanti, MI
Buffalo, NY - Keating, PA
Danville, IL - Terre Haute, IN
Montreal, PQ - Syracuse, NY
Penn Haven - Mehoopany, PA

R&GV RR has (had?) stockholders

Rand Warner found an interesting tidbit in the Jan 1950 issue of *Railroad Magazine*.

Although the Rochester & Genesee Valley RR hadn't functioned since 1871, it continued to draw profits for its stockholders. According to a *Times-Union* article, it was the only RR in the country without indebtedness and paid dividends since it started operation -- which were guaranteed until 2051!

The company had a capital structure of \$555,200 and a 200 year franchise. In 1871, the Erie RR wished to buy it, but stockholders would only lease it. They signed a lease, expiring in 2051 whereby the Erie guaranteed a return of 6 percent of the capitalization. The Erie reorganized in the 1940s and got the stockholders to agree to a 4 percent return.

Rand said that when Conrail took over, that Conrail would only purchase the line. Can anyone fill in these details, like how much the stockholders received and when?

The Semaphore is published monthly by the Rochester, NY Chapter, National Railway Historical Society. It is mailed free to all Chapter members. Non-member's subscriptions are \$5.00 and run from January 1 to December 31. Chapter meetings are held the third Thursday and the Board of Directors meets the first Thursday of each month.

Rochester Chapter NRHS Officers:

President: Dave Luca
Vice President: John Weber
Treasurer: Ira Cohen
Recording Secretary: John Kernan
Correspondence Sec.: Don Shilling
National Director: Bob Miner

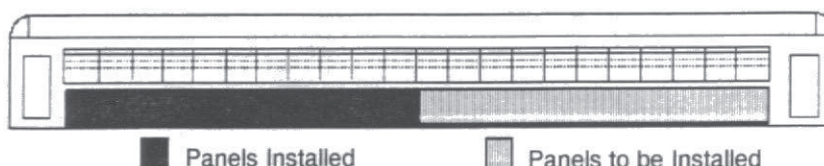
The Semaphore Staff:

Editor: Gale Smith
Contributing Editor: Jeremy Tuke
Printing: Dave Luca

Contributions to **The Semaphore** are welcomed and encouraged from all readers. They should be mailed to: Gale E. Smith, 299 Seneca Park Avenue, Rochester, NY 14617-2433. Phone: (716) 544-6221. Contributors using a computer are asked to send their submissions on any MS-DOS diskette in ASCII format, as well as a printed copy. **Deadline: The first of each month.**

Stillwell Coach Panel Installation Status:

This graphic of the Stillwell coach was extended to represent 22 panels (11 panels per side). All panels have been subscribed. To date, eleven, or those on the west side have been installed.

**The Semaphore**

Rochester Chapter
National Railway Historical Society
P.O. Box 664
Rochester, NY 14603

Non Profit Org.
U.S. Postage
PAID
Rochester, NY
Permit #826

Chapter Meeting & Program:
**Membership Participation
Night**
8:00 PM, March 21, 1996
40 & 8 Club, 933 University Ave.