



The Semaphore

January 1996
Volume 38
Number 5

Newsletter of the Rochester NY Chapter, National Railway Historical Society

January 1996 Program

The next membership meeting will be held at the 40 & 8 Club on January 18. The program for January will be titled "Steam Locomotive Technology", with a lecture and slide presentation given by Chapter member Ron Amberger. Here is the inside story on what makes a steam locomotive tick, from BTU's to tractive force: The mechanical and thermal elements of steam locomotives from the inside out. Learn how a boiler is put together: what are stays, flues, throat sheets, superheaters and what do they do. Also a discussion of valves, pistons, valve gears and all that stuff called "running gear". How powerful were steam locomotives? Bring your questions. This will be a presentation illustrated with slides but you can ask questions too.

Ron Amberger is a professor of mechanical engineering technology at RIT. He teaches courses in thermodynamics, heat transfer, energy management. He has a company which does consulting for electric generating stations, steam plants and users of steam. He did FRA boiler code analysis for both the Knox and Kane and the Susquehanna's (ill fated) Chinese built SY's. He has been a consultant on other steam locomotives and has lectured on steam locomotives. He maintains an extensive library of engineering books related to steam technology and corresponds with others interested in preserving steam locomotive technology for future generations.

Program Committee

Jack Matsik (Chairman) 442-6229
Bill Limburg 586-9470
Dan Cosgrove 352-6931
Dave Luca (Board liaison) 288-0318

The Committee welcomes suggestions and ideas for future programs at forthcoming meetings at the 40&8 Club. Just contact any of the above committee members.



Our Depot in 1972! Photo Times-Union, July 10, 1972 from Chapter Historian, Keith Blackall's files Story on Page 6.

Help!

by Don Shilling

Winter's fury is upon us...

Snow is piling up...

Cold winds are slicing across the depot tracks...

Temperatures are dropping below zero...

It's dark by four o'clock...

Tools are getting lost in the snow...

Metal surfaces are freezing...

Hands are too cold to work...

BOY! — WE REALLY DO NEED AN ALL WEATHER BUILDING!

Won't you please make a tax deductible contribution to the Depot's Silver Anniversary Building Campaign Fund.

From the frozen finger folks. Thank you!!!!

Don is Chairman of the 25th Depot Anniversary Committee and will gladly accept and acknowledge all contributions. His address:

Donovan Shilling
25th Depot Anniversary Committee
1765 Five-Mile Line Rd
Penfield, NY 14526

A Progress Report from the Depot's 25th Anniversary Committee

Our Chapter's major fund drive to raise \$50,000 between now and July is well underway. The Committee's goal is to have enough funds available to purchase a steel building to house the Chapter's oldest rolling stock and to provide a sheltered space so that restoration work can continue throughout the year. Nineteen Chapter members have contributed a total of \$14,425 thus far with many more members pledging their support before July. About 28 percent of our goal has been reached. The bulb in the bottom of the donation thermometer is full and is slowly rising.

Our fund raising campaign might be compared with a steam locomotive just starting on its run ... Right now it's just kind of huffing and chuffing along trying to get up a full head of steam. A lot of inertia must be overcome. So far six percent of the membership has contributed. We know that once the big drivers start turning and the wheels start rolling down the track, we'll reach our destination... Now it's your turn to help fire up the engine...

Partners in Panels Recognition

Our grateful thanks to all those people who contributed so generously to our "Partners in Panels" appeal for funds for rebuilding and restoring our Erie Stillwell coach. Your generosity from the heart has truly been an inspiration that has accelerated progress and expanded the scope of activity on this worthy car specimen.

Anonymous
Cal Bulman
Bernie Cubitt
Chris Hauf
DeWain Feller
Bob Fitch
Bonnie Glickman
Sam & Anna Grover
Chris Huff
Rick Israelson
Edward Jackson
Jim Johnson
Robert McKnight
Henry Meech
Jim Moore
Edwin Mueller
John Redden
Don Shilling
Gale Smith
Star Headlight & Lantern
Tom Tischler
Rand Warner
Jane Weber
John Weber
Chuck Whalen
Ralph Wulff
Roy Wullich, II

In recognition of your support and the progress and accomplishments of our dedicated volunteers, we spot-lighted the Stillwell coach, both literally and figuratively, for our Annual Year End Party. The Erie Stillwell coach was heated and lighted as our centerpiece car for the main food layout of this popular Chapter event.

Our special thanks to Bonnie Glickman for her offer and commitment to match dollar for dollar funds collected in the "Partners in Panels" campaign during September and October.

Membership Committee Report

Thomas A. Way, Chairman

Welcome to these new members:

Jack R. Beattie
3 Loyalist Ave
Rochester, NY 14624
247-6742

Martin W. Dailey
44 Halstead St.
Rochester, NY 14610
482-1595

Gerald Monti
351 Courtly Circle
Rochester, NY 14615
665-5704

David & Marilyn Rogers
236 McKinstry Rd
Gardiner, NY 12525
914-255-9206

Change of Addresses to your April Roster:

Jeffrey A. Carpenter
268 Carling Rd
Rochester, NY 14610

Karl R. McKinney
31 Garfield St
Lexington, Mass 02173

Jeffrey Meadowcroft
225 W. Main St
Laurens, SC 29360

Change of phone number:

DeWain O. Feller
104 Rugby Ave
Rochester, NY 14619
527-9619

Notes & Tidbits:

Although the 1996 Dues Notices were late from National, the Discount Period still expires on February first! These notices are now being distributed and you should have received yours by now. If you haven't, please contact Tom Way, 556 Hurstbourne Rd, Rochester, NY 14609, 482-5787.

Membership Class Makeup:

Regular.....	107
Student/Retiree.....	14
Supporting.....	64
Sustaining.....	10
Patron.....	7
Benefactor.....	9
Sponsor.....	5
Life.....	5
Family.....	26
Total:	247

Ten have National affiliation elsewhere.

Larry Fennessy received City Honor

Chapter member Larry Fennessy received the 'thumbs up' in our local Gannett newspapers recently. He is a Rochester police officer and was named Crime Prevention Officer of the Year.

Submitted by Steve Huse

In Memoriam

Edward L. Maslyn

A long time Chapter member since 1970, Ed passed away on 27 December, and will be missed by us all.

Ed was an active member who had volunteered over many seasons to support our excursion train operations.

Ed was retired from Eastman Kodak with a career of many years as a machinist. While at Kodak Park, one of his many assignments was to remove the old wheels and press new wheels onto the axles of our EKC #6 locomotive.

Ed was housebound the last couple of years with health problems. While at home he was recently presented with his 25-year membership pin by President Dave Luca and National Director Bob Miner.

Our sincere sympathy is extended from the Rochester Chapter to the family of Edward Maslyn.

Rochester & Genesee Valley Railroad Museum

Rand Warner, Chairman, 425-8587

General

Year End party

This year's party spot-lighted the major progress on the Erie Stillwell coach restoration in recognition of sponsors and volunteers on this exciting project -- see separate article.

World Wide Web and Internet

Much interest has surfaced on this new endeavor and we are now "on the air", thanks to Mike Byrne, Chris Hauf and others. Call Mike at 225-5659, or Chris at 381-8583 to get in on the action and excitement.

Looking Back and Looking Ahead

1995 was a year of outstanding accomplishment for our Museum and service to our visitor public. The following pages recap some of the major highlights in each area. Thanks for all your help, donations, ideas and encouragement.

1996 is a year so full of exciting possibilities that it is hard even to list them all. Some of the major opportunities are identified in the following pages. Please call us at the indicated phone numbers with your ideas, suggestions and reactions so we can update our plans and projects.

Partners in Panels

This campaign has gone over the top. Thanks to your efforts and support - see separate article. What a Chapter we've got here! Keep up the good work.

New York Museum of Transportation

With the inauguration of locomotive hauled passenger runs in November and December, our joint operations season was extended in 1995 from six months to eight months. Congratulations to both organizations for a very successful season and we look forward to an exciting 1996 together.

Visitor Operations

Supt. Don Shilling, 381-3171

Major Accomplishments - 1995

Served over 3000 visitors during joint season with NYMT.

Rochester area railroad industries exhibit researched, created, and set up in Depot for season.

Depot host/tour guide manual created and published, and used in training sessions.

Major Goals - 1996

Expansion of scope of visitor activities in terms of tours, rides, exhibits, displays, and schedules.

Improved signage to assist both escorted and unescorted visitors at our museum facilities

Train Operations

Supt. John Redden, 594-2227

Major Accomplishments - 1995

New rulebook created, published and issued

Quarterly safety meetings conducted

Monthly operations meetings conducted.

Annual safety inspection/review conducted

First revenue, locomotive-hauled passenger trains operated between NRHS and NYMT Museums

Fire inspection/safety review conducted.

Training sessions held for track car crews

Logs created for crews, track, equipment.

Track car trains hauled over 3000 passengers

Major Goals - 1996

Crew training, testing and certification.

More formal record keeping to support insurance, etc.

Motive Power

Supt. John Redden, 594-2227

Major Accomplishments - 1995

Maintained five diesel locomotives operational throughout warm weather season.

Completed upgrade of block heater wiring on all five diesel locos.

Maintained three diesel locos, with antifreeze, operational throughout winter season.

All five diesel locos operated at September picnic.

Major Goals - 1996

Repaint EKC #6 diesel.

Rehab brakes RG&E #1941 diesel.

Acquire small steam loco to operate.

Look into self-propelled shuttle car(s).

Passenger Equipment

Supt. Bob Miner, 671-3589

Major Accomplishments - 1995

Replaced pedestal liners on two cars of our excursion train set at Sodus.

Erie Stillwell coach panelled on one side, closed in with new and temporary windows and roof sealed.

Maintained complete train set operational for excursion season.

Major Goals - 1996:

Repaint DL&W baggage car in Lackawanna color scheme

Reside bad outside wall of Pine Falls.

Complete exterior work on Erie Stillwell coach.

Freight Equipment

Supt. Chris Hauf, 381-8583

Major Accomplishments - 1995

Donation of 1910 tank car by Kodak Park Railroad.

Donation of locally made transfer ca-boose by Conrail.

Relocate PRR hopper car onto track and put into ballast service.

Major Goals - 1996

Rehab of BR&P caboose

Operational flat car.

Rehab Conrail transfer caboose

Complete B&O bay-window caboose exterior work.

Maintenance-of-Way Equipment

Supt. Norm Shaddick, 865-2773

Major Accomplishments - 1995

Completion of fully operational new track motor car "Mader Mobile".

Completion of fully operational new track motor car "Roe Mobile".

Major maintenance of track motor car TC #2.

Start up and run of Kershaw diesel snow broom.

Acquired Ford hi-rail boom/dump truck.

Acquired and rehabbed Fairmont track crane and tender.

Major Goals - 1996

Acquisition of Jordan spreader, plow or tie inserter.

Overhaul of TC #2 motor for 1996 season.

Acquire locomotive crane.

Rehab Kershaw snow broom

Track & Right-of-Way

Acting Supt. Rand Warner, 425-8587

Major Accomplishments - 1995

Dismantled and relocated half mile of track and nine switches from Delphi Automotive Systems.

Upgraded track connecting our NRHS and NYMT Museums to permit locomotive hauled revenue trains to operate end to end on our system.

Major Goals - 1996

Rehab NYMT switches.

Lay out passing siding near Reid's crossing.

Extend Siding #8.

Pursue additional right-of-way easements.

Dispose of unneeded track materials for dollars.

Communications, Signals & Power

Supt. Neil Bellenger, 359-9985

Major Accomplishments - 1995

Operational signal system on hill block.

Installation of two, different, permanent signals.

Participation in Electrification Committee with NYMT to plan for trolley overhead and operation.

Upgraded of two-way radio system.

Upgraded of PA system for inside & outside use.

Upgraded of telephone system for inside & outside use.

Upgraded of outside power distribution system.

Acquired utility line truck for setting poles.

Major Goals - 1996

Acquire electric car to operate on trolley line.

Acquire 600v DC power supply to operate electric cars.

Begin construction of first 1000 feet of electrified trackage beginning near NYMT barn.

Install mile markers at remaining 1/10 mile intervals, to support engineering, construction, trackwork, operations, trouble reporting, electrification, surveys, etc.

Buildings & Grounds

Supt. Dave Luca, 288-0318

Major Accomplishments - 1995

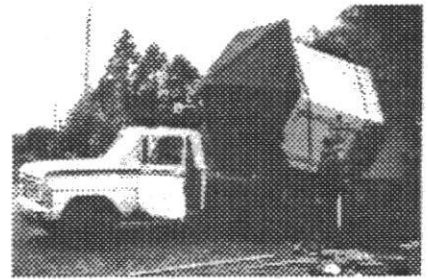
Concrete walk apron replaced at Depot.

Large area of land cleared along west side of Conrail main.

Acquired and brought in Conrail Flexivan trailer.

Dismantled and brought in Conrail Flexiflo office.

Acquired and delivered hexagonal crossing watchman shanty.

**Major Goals - 1996.**

Break ground for new restoration building being sponsored by our Capital Fund Drive.

Erect former Dan Cosgrove Flexiflo office in expanded form for maintenance of construction equipment and track cars.

Gravel our main parking lot.

Extend cleared land area west of Conrail.

Install additional new concrete in Depot aprons.

Expand loading ramps for passengers.

Construction & Equipment

Supt. Joe Scanlon, 392-8841

Major Accomplishments - 1995

Acquired and operated Caterpillar D-7 bulldozer.

Acquired and operated Caterpillar D-2 bulldozer.

Acquired and operated Bucyrus-Erie crawler backhoe.

Acquired and operated Link Belt LS-90 crawler crane.

Used P&H crane to set PRR hopper car onto tracks.

Used Lorain clamshell crane to unload six ballast cars.

Acquired heavy Mack 10-wheel diesel truck.

Cleared and graded several acres of land along west side of Conrail.

Developed new methods to pour and place concrete.

Set up Flexivan trailer and made operational.

Made motorized concrete buggies operational for use.

Acquired and operated of Trojan 3-yard diesel loader.

Major Goals - 1996

Build up super truck on Mack 10-wheel chassis.

Relocate Lorain crane cab onto new base.

Rehab and operate Bucyrus-Erie 15B crawler crane.

Rehab and operate Barber-Greene crawler conveyor.

Dispose of unneeded construction equipment for dollars.

Continue to grade and clear land west of Conrail

Acquire operational skid steer loader.

Rehab our backhoe tractor or acquire replacement.

Tool Car & Shops

Supt. Charles Harshbarger, 266-8339

Major Accomplishments - 1995

Acquired steel outdoor storage racks.

Installed new benches and files in tool car.

Installed new cabinets in Depot for supplies.

Acquired several new power tools.

Acquired and used gas powered generator set.

Major Goals - 1996

Set up dedicated bench for air brake valve testing.

Review indoor and outdoor storage of combustibles.

Paint roof of tool car B&O #633.

Engineering Department

Supt. Jim Johnson, 467-1672

Major Accomplishments - 1995

New file cabinets acquired and setup for all functional areas.

Map collection sorted and filed.

Technical book collection sorted and

filed.

Log books established for maintenance records.

Bound file folders set up for each piece of equipment.

MacIntosh computer system donated, set up and operating.

Major Goals - 1996

Complete the organization of function files.

Develop data to support construction of new building.

Develop integrated map(s) showing all current construction and utilities.

Thanks to

• Wayne Morrison for donation of Ford F600 grain body dump truck cab and chassis.

• Consolidated Rail Corp. for donation of transfer caboose

• Manitou Construction for donation of Mack 10-wheel cement truck with Dial-a-Mix unit.

• Rand Warner and George Knab for acquiring and delivering 6-wheel Ford high-rail, boom-dump truck

• Dan Swanger of Engineers Joint Training Fund for offer of crane carrier chassis to mate with our Lorain clam-shell crane.

• Jim Johnson for new fluorescent lights

• Charles Harshbarger for filing cabinets

• Steve Huse for new seat cushions for trailer car

• Wayne Morrison for use of stake body truck to go to New Jersey for pickup of shop floor crane

Wish List

> Locomotive crane in operating condition

> Operable small steam locomotive.

> Operable double ended trolley.

> Good usable flat car.

> Good usable Jordan spreader.

> Diesel generator set, 300-500 KW capacity.

> Self-propelled rail car for shuttle service.

> Set of electric (Whiting), or air (Duff-Norton) operated passenger car jacks.

> Stencil cutter

> Conduit thread tap & die set.

> Good usable tie inserter

For Sale

Equipment:

Call Joe Scanlon, 392-8841

• 1953 Brockway truck cab & chassis, gas

• 1945 Rome grader, diesel

• 1950's Towmotor fork lift, propane.

• 1950's LS-90 crane, diesel

• 1950's D-2 dozer, diesel

• Ford fork lift, gas

• Concrete carrier, gas

• 1938 Bay City shovel, gas

• Crane Boom sections.

Materials:

Call Rand Warner, 425-8587

• Landscape ties

• Switch timbers for landscape

• 250-gal outdoor storage tanks

• Scrap steel

• Scrap batteries

• Rail parts and switch parts.

Author desires local NYC info.

Geoffrey Doughty, author of *New York Central's Great Steel Fleet 1948-1967*, is collecting information for two more books. One will cover NYC's light-weight cars, the other will be about NYC stations and terminals.

He is looking for really good black and white (as well as color) photos taken during the postwar period. He states he has been fortunate getting material about NYC operations across the system, but would like more in the Rochester-Syracuse area, especially station shots, exterior, interior, platform, etc.

His address:

Geoffrey H. Doughty, 5 Village Circle, Lyman, Maine 04005.

25th Anniv. Depot Celebration

What has happened during the years?

From the files of our Chapter Historian, Keith Blackall will be documenting the activities and accomplishments that have occurred at the Depot. There will be at least five articles, each will span a five year period.

Keith forwarded a story that appeared in the Monday, July 10, 1972 edition of the *Times Union* titled "Station to be Museum" and sub-titled "Railroad buffs work to convert 'an eyesore into a showplace'". The picture on Page 1 is from that article.

Work started the previous winter with patching the roof, fixing broken windows and clearing the basement of

water (what's new!) and two feet of cinders, coal and debris.

Vandals had smashed windows, railings, woodwork and doors, and had removed drawers, light fixtures and even a wood stove.

Gerald A. Hott was chapter president at the time. The agent between December 1937 and February 1940 was James Cully, then living in Batavia who remembered the structure as a 'polished' station.

Passenger service stopped on Sept. 30, 1941. In 1972, the Erie tracks west of the station were part of a proposed rapid transit system. Our current objective is to see 'passengers' on those rails again -- as museum and excursion operations rather than rapid transit.

Follow-up on Pittsford RR history

Al Rodgers of Pittsford provides a follow-up to Mr. J. Edward Jackson's article, "Railroad Recollections of Pittsford, NY" which appeared in the November *Semaphore*. Has to do with buildings containing planks with red, white and blue stripes from former railroad cars.

Mr. Rodgers purchased a house in 1985 and noted his garage appeared to be constructed of old "boxcar" siding. The house and garage were built about 1918. The wood used for the garage was yellow pine tongue and groove boards, approx. 1 to 1-1/4" thick by 3 to 6 inches wide. The boards contained nail holes and were either painted white or varnished bare wood. On the white pieces there was either a two color stripe or black numbers similar to old railroad car numbers. This structure was torn down in 1992. While recycling this lumber, Al found a section that appeared to be complete car number.

In 1993, Al built an addition that required removing all the original clapboard siding on the west face of the house. Under this siding was an entire wall sheathed with the same tongue and groove boards. Further demolition of the second floor ceiling uncovered more of these boards used as a false ceiling.

Al closes with "I am sorry I have no pictures of the walls to give to you, but I thought of this as simply a curiosity at the time, and followed it no further. My thanks to you and Mr. Jackson for preparing and publishing the article. It's interesting to know I own and live in a bunch of old reefer cars."

From the Internet

Submitted by Mike Byrne

On-line correspondent, Al Turner, monitors Amtrak's problems. In a early November one-week period, there were 51 delays or re-routings as result of freight derailments, signal problems, track work, or 'mother nature'. Mr. Turner tracks non-Amtrak initiated problems, wonder if anyone tracks those attributable to Amtrak, such as equipment failures, etc.?

Downsizing

Burlington Northern/Santa Fe is discharging 960 management personnel in Ft. Worth, Schaumburg, Topeka and St. Paul.

Norfolk Southern announced 272 management employees accepted a voluntary buyout.

News from the National

The 1995 Membership consisted of 17,720 Regular members and 3,713 Family members for a total of 21,433 as of November 1st.

1996 Railway Heritage Grants Program: \$28,000 is available with the maximum individual aware being \$5,000. Procedures and applications should be available by January 15, with deadline for submissions set for May 1. The Grants program is funded solely by donations, not from dues money.

Excess books/items for sale: Duplicate and excess books and other materials from the NRHS Library collection is available for sale. A year's worth of catalogs for \$2.00 should be sent to The Depot Attic, 209 Gap Road, Strasburg, PA 17579-9782, who is the sole reseller.

Conrail (America on Line)

Conrail distributes a weekly electronic newsletter for and about employees. The November 2nd, 1995 issue reported the following comparisons:

	CR	NS	CSX	SF	BN	UP
FRA Freq. Rate	3.4	1.5	1.6	1.7	2.9	3.3 (a Safety Index)
1994 Operating Ratios	81.5	73.4	79.9	84	82.9	77.9 %
1994 Return of funded assets*	9.8	11.5	11.8	11.5	13.5	11.7 %

* Earning the cost of capital which is 11% for Conrail.

Conrail unit traffic was down 5.1% from the previous YTD figure.

Editor's Comments

My thanks to our regular contributors, Rand Warner, Mike Byrne, Tom Way, Don Shilling and Jack Mastik, and letters from Steve Huse and Al Rodgers, and Mary Hamilton-Dann for the map.

Forthcoming are articles by Dab Cosgrove and Don Shilling. Also interviews and, hopefully, that article on Mr. Stillwell and his coach -- promised a year ago!

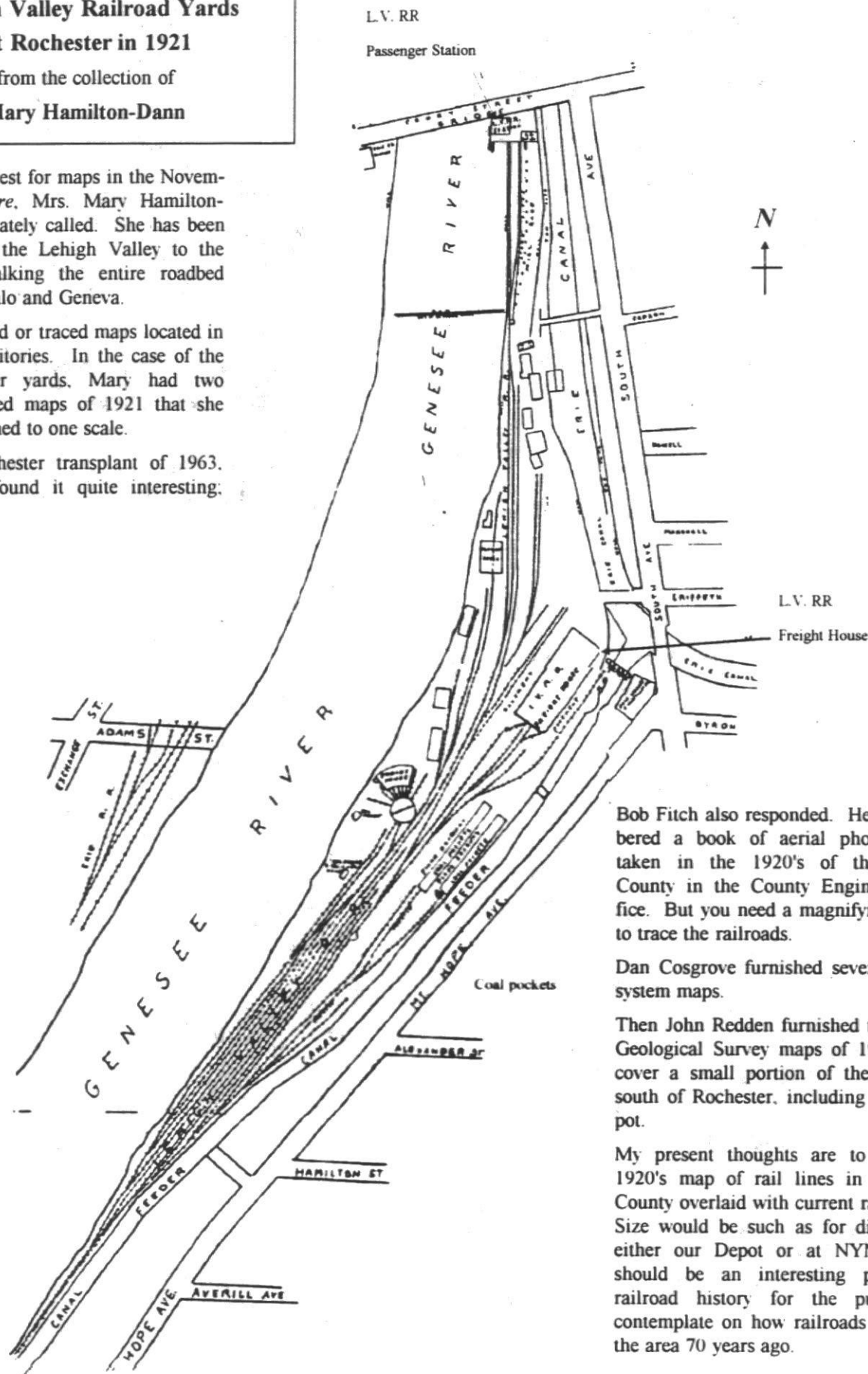
Lehigh Valley Railroad Yards At Rochester in 1921

from the collection of
Mary Hamilton-Dann

With the request for maps in the November *Semaphore*, Mrs. Mary Hamilton-Dann immediately called. She has been documenting the Lehigh Valley to the extent of walking the entire roadbed between Buffalo and Geneva.

She has copied or traced maps located in various depositories. In the case of the LV Rochester yards, Mary had two different scaled maps of 1921 that she had to combined to one scale.

Being a Rochester transplant of 1963, your editor found it quite interesting; hope you will.



Bob Fitch also responded. He remembered a book of aerial photographs taken in the 1920's of the entire County in the County Engineer's office. But you need a magnifying glass to trace the railroads.

Dan Cosgrove furnished several NYC system maps.

Then John Redden furnished two U.S. Geological Survey maps of 1935 that cover a small portion of the County south of Rochester, including our Depot.

My present thoughts are to have a 1920's map of rail lines in Monroe County overlaid with current rail lines. Size would be such as for display at either our Depot or at NYMT. It should be an interesting piece of railroad history for the public to contemplate on how railroads affected the area 70 years ago.

The Semaphore is published monthly by the Rochester, NY Chapter, National Railway Historical Society. It is mailed free to all Chapter members. Non-member's subscriptions are \$5.00 and run from January 1 to December 31. Chapter meetings are held the third Thursday and the Board of Directors meets the first Thursday of each month.

Rochester Chapter NRHS Officers:

President: Dave Luca

Vice President: John Weber

Treasurer: Ira Cohen

Recording Secretary: John Kernan

Correspondence Secretary: Don Shilling

National Director: Bob Miner

The Semaphore Staff:

Editor: Gale Smith

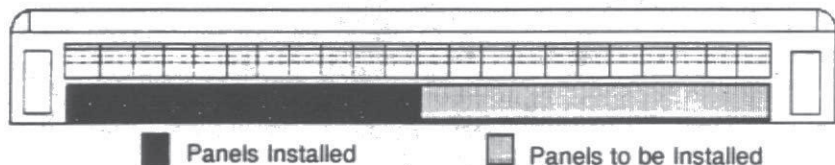
Contributing Editor: Jeremy Tuke

Printing: Dave Luca

Contributions to **The Semaphore** are welcomed and encouraged from all readers. They should be mailed to: Gale E. Smith, 299 Seneca Park Avenue, Rochester, NY 14617-2433. Phone: (716) 544-6221. Contributors using a computer are asked to send their submissions on any MS-DOS diskette in ASCII format, as well as a printed copy. **Deadline: The first of each month.**

Stillwell Coach Panel Installation Status:

This graphic of the Stillwell coach was extended to represent 22 panels (11 panels per side). All panels have been subscribed. To date, eleven, or those on the west side have been installed.

**The Semaphore**

Rochester Chapter

National Railway Historical Society

P.O. Box 664

Rochester, NY 14603

Non Profit Org.
U.S. Postage
PAID
Rochester, NY
Permit #826

Chapter Meeting & Program.

Steam Locomotive Technology

Presenter: Ron Amberger

8:00 PM, January 18, 1996

40 & 8 Club, 933 University Ave.