

**NEXT MEETING:**  
**October 16**  
**Jim Otto and Ken Freeman:**  
**"The Hojack in Hilton"**



Dave Scheiderich caught our 2012 "Rare Mileage Excursion" at Conesus Lake Junction on October 27, 2012, which then consisted of two of our ex-NYC coaches and the RPO-turned-power-car. Our 2014 Fall Foliage Express trains will feature three coaches, and it is expected all four trains will be sold out to capacity. This year's run will be the first fall foliage excursions we have operated in nearly a decade. DAVE SCHEIDERICH PHOTO

# On The Road Again

**INSIDE**

Pit Progress ..... 2

Museum News ..... 3

We are all very excited to see our ex-New York Central *Empire State Express* coaches return to the rails on October 18. It's great to see the *Fall Foliage Express* return after an absence of nearly ten years, dating back to when we ran regular excursions with the cooperation of the Ontario Midland Railroad in Sodus. We are very grateful to the Livonia, Avon & Lakeville Railroad for allowing us this opportunity, and we're already looking forward to sell-out crowds on board the trains.

A lot has changed in ten years... We have transformed from a chapter of the NRHS to an independent railroad museum. We have acquired new pieces for the collection and retired others. But what hasn't changed is our dedication to preserving Rochester's rich railroading history for the public to enjoy. And we couldn't do it

without the help of our volunteers and our generous donors.

Don't forget we are also hosting the joint "Halloween Express" with the NYMT on October 25 and can use help staffing this event. Also coming up in November are our annual elections (watch the mail for your next issue of *The Semaphore* containing the official ballot). The holidays are right around the corner, and we look forward to hosting more fun events for our members and their friends and family to enjoy with us.

Can you think of other ways we could use our coaches to generate revenue for the museum? I'd like to hear from you by phone (716) 474-2833 or by email at [mdow@rochester.rr.com](mailto:mdow@rochester.rr.com).

—Mike Dow,  
 Museum President





[www.rgvrrm.org](http://www.rgvrrm.org)

**MUSEUM OFFICERS**

**PRESIDENT**

Mike Dow  
(716) 474-2833

**VICE PRESIDENT**

Joe Nugent

**TREASURER**

Dave Peet

**RECORDING SECRETARY**

Joel R. Shaw

**CORRESPONDING SEC'Y**

Don Wawrzyniak

**TRUSTEES**

Bob Burz  
Peter Gores  
Jim Johnson  
David Scheiderich  
Otto M. Vondrak  
Mark Wilczek



The official publication of  
the Rochester & Genesee Valley  
Railroad Museum

Volume 58, No. 2

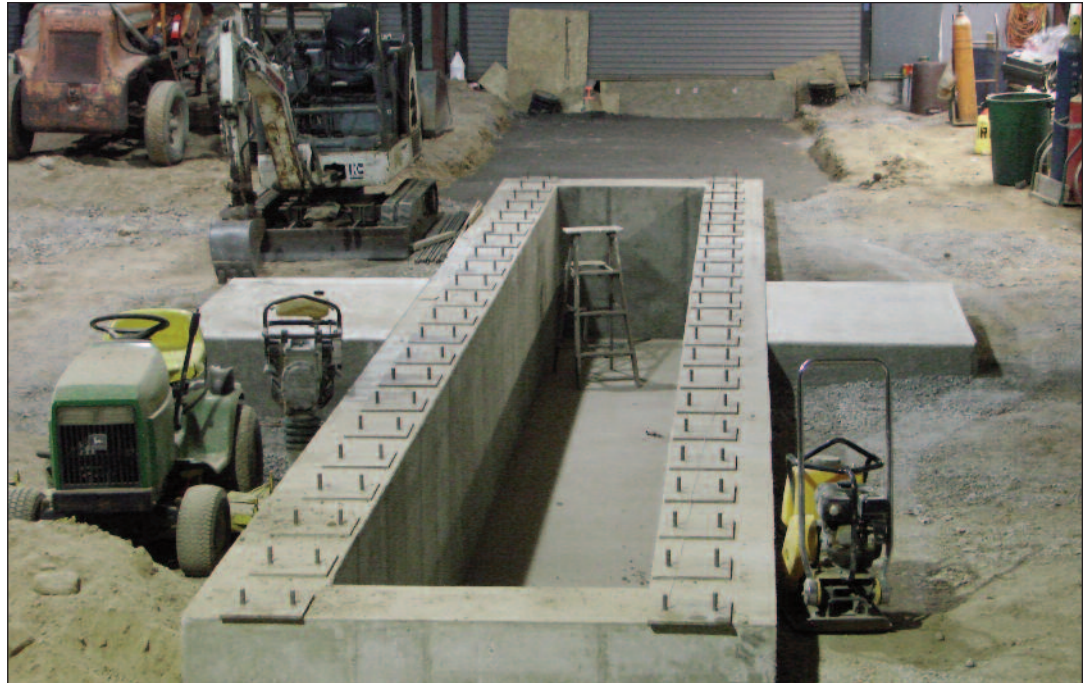
**EDITOR**

Otto M. Vondrak  
ovondrak@yahoo.com

**PRINTING AND MAILING**

Dave Peet  
Don Wawrzyniak

©2014 Rochester & Genesee Valley Railroad Museum. The Semaphore is published monthly by the Rochester & Genesee Valley Railroad Museum. It is mailed free to all members. Non-member subscriptions are \$12.00 and run from January 1 to December 31. Meetings are held the third Thursday of each month, and the Board of Trustees meets the first Thursday of each month. Any items related to the activities of the Rochester & Genesee Valley Railroad Museum, and regional railroad history and current events are gladly accepted.



# POUR *the* FLOOR

**ABOVE:** The inspection pit has taken shape inside our Restoration Building, seen here in this view looking north. The concrete blocks on either side are jacking pads, to allow a safe location that will withstand the forces of jacking up a piece of railroad equipment. **BELOW:** This view looks south and shows the wooden forms in place to pour one of the slabs that will support the running rails that will exit the building on Track 9. To complete

this project, we will be pouring concrete floor from the east wall all the way to Track 7, but we need to raise \$15,000 to do it. Can you help? Your tax-free contribution will help create a safe and professional environment for our volunteers to better make repairs and work on equipment that is part of our historic collection. Visit our "Pour The Floor" campaign at [www.rgvrrm.org/support](http://www.rgvrrm.org/support).



**JOIN THE MUSEUM TODAY**  
**Annual Dues: \$25.00**  
Rochester & Genesee Valley RR Museum  
P.O. Box 23326  
Rochester, NY 14692-3326

**PLAN AHEAD: Next Meeting:**  
**November 20**  
at 40&8 Club, Rochester, NY



**MUSEUM CONTACT INFO**

**MUSEUM PRESIDENT**

**Mike Dow**

(716) 474-2833 mdow@rochester.rr.com

**MUSEUM MANGLER**

**Mark Wilczek**

(585) 721-1377 mwilczek@rochester.rr.com

**MOTIVE POWER SUPT.**

**Joe Nugent**

(585) 944-1047 joe.r.nugent@gmail.com

**OPERATIONS SUPT.**

**Jim Otto**

(585) 755-8942 jamesotto@gmail.com

**MEMBERSHIP CHAIRMAN**

**Sam Rosenberg**

ALC0251@frontiernet.net



Construction of our third track car trailer continues, with the mounting of the axle to the frame, seen here with volunteers Rand Warner and Norm Shaddick. This new trailer will help enhance track car operations for next season. JOEL R. SHAW PHOTO

**UPCOMING MUSEUM PROGRAMS  
MONTHLY MEETINGS**

Monthly museum meetings move back to the 40&8 Club located at 933 University Avenue in Rochester, New York. Doors open at 7:00, and the business meeting begins at 7:30. Following the meeting is our monthly entertainment program. Cash bar available. All are welcome to join us!

**October 16:** "The Hojack in Hilton" by Jim Otto and Ken Freeman will review the history and last years of this former New York Central line.

**November 20:** Members' Slide Night and Elections. Limit to 40 slides or digital images per person. We will provide slide and digital projectors. If you have images to share for Members' Slide Night, please RSVP to **John Stewart** at (585) 704-8885 or email johnrstewart3@gmail.com. John has volunteered to be out new Program Committee Chairman!

—R&GV Program Committee

**FALL FOLIAGE EXPRESS  
SATURDAY, OCTOBER 18**

The Fall Foliage Express has completely sold out! Thanks to the hard work of many volunteers who worked tirelessly to get our train ready for our first fall foliage excursion in more than 10 years. If you're looking to volunteer, we need help with park-

ing, check-in, concessions, and more. Please contact **Dave Shields** by email at marberth@aol.com for details.

—Otto Vondrak

**RESTORATION SHOP UPDATE**

Over the past couple of months we have been working very hard on getting things ready for more concrete floor in the Restoration Building. First, holes were dug, rebar cages fabricated, and concrete poured for the two jacking pads on either side of the inspection pit. Then Track 9 needed to be realigned slightly to have it line up properly as it approached the building. This stretch was also adjusted in elevation (thanks to our Jackson Tamper), some portions being lifted 8" to provide a proper slope to the building.

Next, the areas for running rails were dug out, and stone was placed and tamped. Forms for the concrete base were set the week of October 12. In the next two weeks we expect to have connected track back into the building, just six months after removing the rail to start this project!

The work over the last few months has entailed a lot of labor with not a big outlay of funds. From here forward it will be the

opposite, relatively little labor needed, but a lot in material costs. Depending on what Mother Nature gives us, we have another 6 to 8 weeks of being able to pour concrete. Our goal for this fall is to pour the floor between the east wall of the building and Track 7, and to make this happen, we need approximately \$15,000. While we realize everyone may not be able to contribute, but **if every museum member contributed \$50.00 we would meet our goal.** Time is of the essence. The building is cleared out for this work and the weather is closing in. Would you please consider helping? Your tax-free donations can be accepted on our web site at [www.rgvrrm.org/support](http://www.rgvrrm.org/support) by mail to P.O. Box 23326, Rochester, NY 14692-3326. Thank you!

—Mark Wilczek, Museum Manager

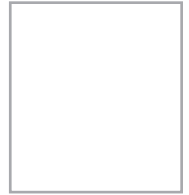
**RGVRRM BOARD MEETING**

The next Board of Trustees meeting will be Thursday, November 6, 2014. To get an item added to the agenda, please contact president Mike Dow at (716) 474-2833 or [mdow@rochester.rr.com](mailto:mdow@rochester.rr.com). Remember that any members are welcome to attend, but to address the board, you must be on that meeting's agenda. **S**





**THE SEMAPHORE**  
 ROCHESTER & GENESEE VALLEY RAILROAD MUSEUM  
 P.O. BOX 23326  
 ROCHESTER, NY 14692-3326



This Month's Meeting:

**October 16**

7:30 PM at 40&8 Club  
 933 University Ave., Rochester NY

Next Month's Meeting:

**November 20**

7:30 PM at 40&8 Club  
 933 University Ave., Rochester NY



— Like us on Facebook: [facebook.com/rgvrrm](https://www.facebook.com/rgvrrm) —

# Visit [RochesterTrainRides.com](http://RochesterTrainRides.com)



## Joint Operating Season Schedule

**October 2014**

- Sunday 5 – "Fall Foliage" – Trolley and Diesel
- Sunday 12 – "Fall Foliage" – Trolley and Diesel
- Monday 13 – Columbus Day - NO TRAINS
- Saturday 18 – Fall Foliage Excursions on LA&L
- Sunday 19 – "Fall Foliage" – Trolley and Diesel
- Saturday 25 – "Halloween Express" – Trolley rides only
- Sunday 26 – "Fall Foliage - Last Day" – Trolley and Diesel

**FALL FOLIAGE EXPRESS: OCT. 18**

Visit [www.rgvrrm.org/fallfoliage](http://www.rgvrrm.org/fallfoliage)